

PANORAMA

Salisbury University's Guide to Cultural & Educational Events

LATINO



- 9** **Opera Through the Ages**
 Highlighting opera's most iconic and recognizable choruses.
- 23** **Festival Latino**
 Free, family-friendly and open to everyone!
- 26** **CultureFest**
 Celebrate the diversity within all of us.



WELCOME

A MESSAGE FROM THE PRESIDENT

The start of a new academic year fills me with excitement and anticipation as we prepare to embrace a new season of growth, discovery and opportunity.

I am particularly thrilled about this year's cultural theme: *Latinidades*. This theme invites us to explore the profound influence of Latin American and Latino communities, which have a significant impact here on the Eastern Shore and across the globe. The rich, diverse cultural expressions within these communities will be highlighted throughout the year with events such as the Latin American and Latinx Symposium, discussions on immigration and health in our region, and films that help capture cultures different from our own.

Perhaps what excites me most each year is the opportunity to celebrate our students. From student recitals to art shows, seeing and hearing the talent and dedication they bring to their art is a treat not to be missed!

These events not only showcase our students' abilities but also provide a platform for them to express their unique perspectives and creativity. It's inspiring to witness their growth and to support their journeys as they develop their skills and pursue their passions.

This year promises a variety of opportunities to engage with diverse cultures and witness the incredible talents of our community and our globe. I look forward to seeing you throughout the year at one of these great events.



Dr. Carolyn R. Lepre
President, Salisbury University



VISITORS ARE WELCOME

Salisbury University events are **open to the public** and we're excited to welcome you to our campus! **Please note that events in *Panorama* are subject to change**; to be sure you have the latest information before you come to campus for an event, visit the *Panorama* webpage and scroll to the Event Listings tab to double check dates, times and locations: salisbury.edu/panorama



ACCESSIBILITY

SU is an Equal Opportunity/AA/Title IX university and provides reasonable accommodation given sufficient notice to the University office or staff sponsoring the event or program. Each event listing includes contact information for the associated sponsor to arrange accommodations.



PARKING

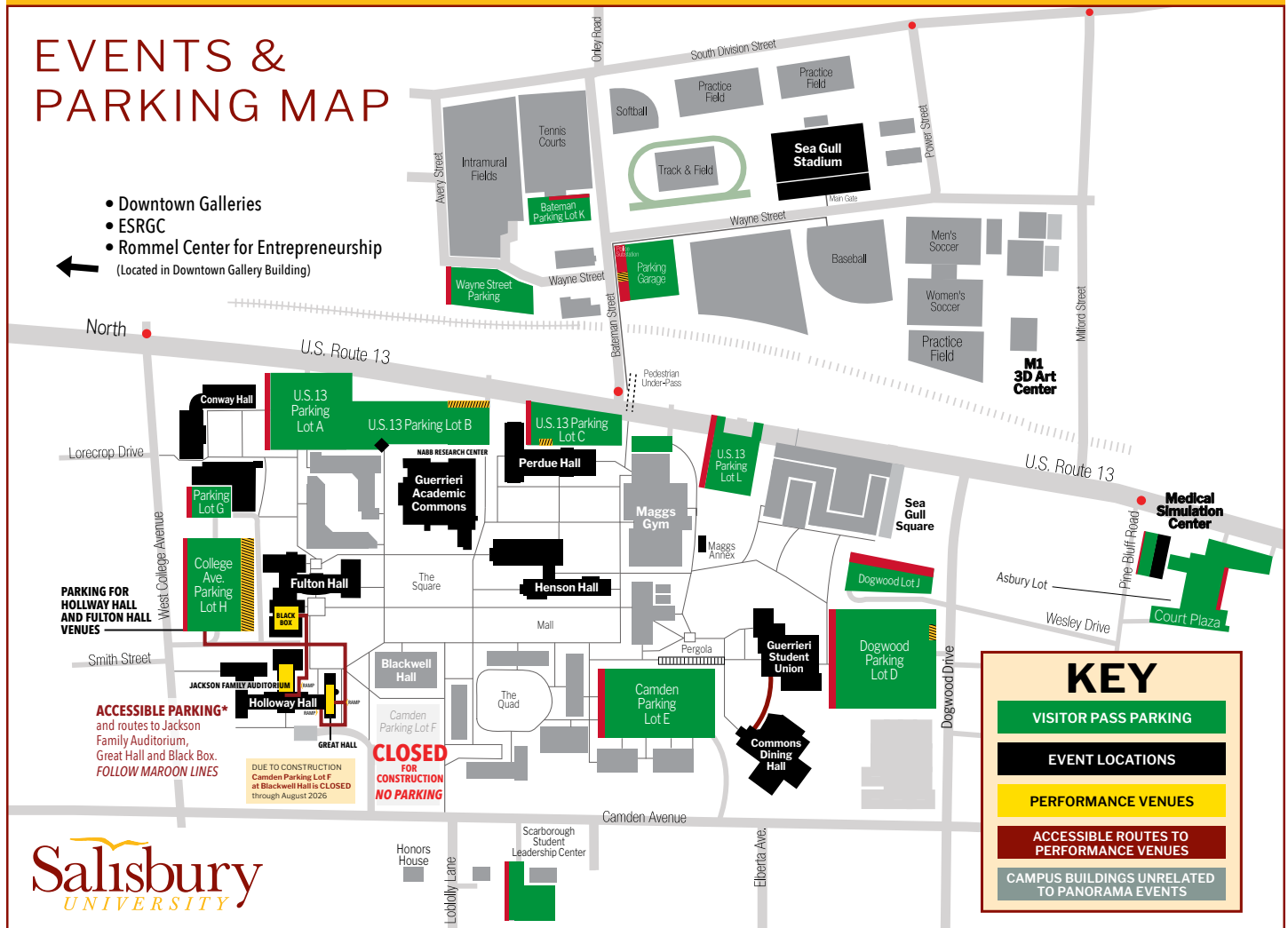
All visitors must request a **FREE visitor parking pass** to park on our campus.

You can get your parking pass authorization at salisbury.edu/visitor-parking or by scanning this QR code:



You can also call the **Parking Services Office at 410-543-6338**.

Please Note: Due to construction, **Camden Parking Lot F at Blackwell Hall is CLOSED** through August 2026. For events taking place in Holloway Hall and Fulton Hall, we suggest you park in College Avenue Parking Lot H. This lot also includes accessible routes to venues in these buildings.



WAYS TO STAY CONNECTED

Explore SU Know a student who is interested in attending SU? Currently, our Admissions team offers daily tours as well as Saturday open houses. Learn more at: salisbury.edu/visit The Admissions team is on hand from 8 a.m.-4:30 p.m. Monday-Friday to answer any questions you may have: admissions@salisbury.edu or **410-543-6161**.

Get Social With Us Check out a video tour on our YouTube channel: youtube.com/salisburyuniversity

View our playlists to learn more about SU, including spotlights on each of our academic programs and other areas of campus life.

You can even take a virtual stroll through the Arboretum: salisbury.edu/arboretum

Be sure to follow SU on Facebook and Instagram.

Go Gulls! You can get the latest news and connect with other Gull enthusiasts. Fans can follow the SU Sea Gulls on Facebook, Twitter and Instagram [@suseagulls](https://twitter.com/suseagulls)

CATEGORIES

PERFORMING ARTS

6

Cultural Affairs: Delmarva Big Band; Tango Lovers - Volver 2; Peacherine Ragtime Society Orchestra; Estonian Rebecca Kontus Trio

Peter & Judy Jackson Chamber Music Series: Brazilian Composer & Pianist André Mehmani; Still Waters Trio

Music, Theatre & Dance: PETER & JUDY JACKSON MUSIC PROGRAM: Allegheny Ensemble; Ghost Notes Concert; Singers' Showcase; Joint Senior Recital Featuring Mezzo-Soprano Rheyra Ford & Pianist Molly Fullerton; Joint Recital with Award-Winning Vocalists Keilly Wolff & Grace McCreary Bagley, Mezzo-Sopranos; Percussion Ensemble;

World Drum Ensemble; Recital: Eric Gehl, Percussion; Piano & Strings Recital; Opera Through the Ages!; Salisbury Pops; Jazz Ensemble; Vox Concordia Presents Winter Reflections; A Not-So-Silent Night; Salisbury Youth Orchestra; Flute Ensemble; PRESTO - PRESTO Recital

SALISBURY SYMPHONY ORCHESTRA: Fall Concert Featuring Dwight Parry, Oboist; Holiday Concert Featuring Melissa Harvey, Soprano

BOBBI BIRON THEATRE PROGRAM: *Fefu* & *Her Friends*; Devised Performance

DANCE PROGRAM: SU Dance Company Fall Student Showcase

VISUAL ARTS & EXHIBITIONS

14

Art Department & SU Art Galleries: Conversations: Stop Motion Animation by New Media Art Students; Muriel Hasbun: With the Pulse of a Community / Con el pulso de una comunidad; Muriel Hasbun Closing Reception & Close Slow Looking; John Mosher: Wanderer; Ashley Moog Bowsbey Visiting Artist Talk; Johab Silva Visiting Artist Talk; Cara Ober & Raquel Castedo, *BMore Art Magazine* Visiting Artist Talk; Cara Wade Faculty Artist Talk; 71st Senior Exhibition: Fine Arts & Graphic Design

Guerrieri Student Union Art Space: Brea Branche, Allow Yourself to Be (Painting); Rachel Carbo, Looking Without Seeing (Painting); Delaney Cinnamon, Derivatives of Emotion (Painting)

Nabb Research Center for Delmarva History and Culture: The Bigger Picture of Aerial Photography; Enduring Connections, Enduring Legacies: Black Histories on Delmarva in the Late 19th Century

LITERARY ARTS & FILM

18

Film at Fulton: *Argentina, 1985*; *El Norte*; *Tótem*

Writers on the Shore: Creative Writing Festival; Ryan Habermeyer; Rachel M. Hanson; Victoria Lancelotta; Sarah Barber

LECTURES, SEMINARS, SYMPOSIUMS

19

Environmental Studies Colloquia: Internship Experiences; Immigration & Health in Rural Maryland; Maryland Climate Policy

Fulton Public Humanities: Book Talk: The State's Sexuality: Prostitution & Postcolonial Nation Building in South Korea; Buddha on the Silver Screen; Latin American & Latinx Symposium

Fulton School of Liberal Arts: Fulton Faculty Colloquium

Henson School of Science & Technology: Henson Seminar Series

Who? How? When? Contributions of Forensic Anthropology & Forensic Odontology to Casework

Modern Languages & Intercultural Studies Department: Languages Across the Disciplines

Institute for Public Affairs & Civic Engagement (PACE): Democracy Across the Disciplines Lecture Series

Seidel School of Education: E. Pauline Riall Lecture Series - Diane Ravitch

HERITAGE MONTHS

22

Native American Heritage Month

FULTON PUBLIC HUMANITIES PROGRAM: Jessica Lauren Taylor Lecture; River Networks & Ancestral Pathways

ADVENTURES IN IDEAS HUMANITIES SEMINAR: Land & Water Protectors: Native Americans & the Environment

Hispanic Heritage Month

MODERN LANGUAGES & INTERCULTURAL STUDIES DEPARTMENT: Festival Latino!

National Disability Awareness Month

OFFICE OF DIVERSITY & INCLUSION: Film Screening: *Hearts of Glass*

FESTIVALS & SPECIAL EVENTS

24

Fulton School of Liberal Arts: *Panorama* & Cultural Fellowship Launch!; Fall for Fulton; One Maryland One Book

Alumni Homecoming & Family Weekend

Nabb Research Center for Delmarva History and Culture: Nabb Center at Homecoming Flock Party

Office of Diversity & Inclusion: CultureFest; Omari Banks in Concert

Maryland Folk Festival

Modern Languages and Intercultural Studies Department: Festival Latino!

Sea Gull Century

College of Health and Human Services: Tour of the Richard A. Henson Medical Simulation Center

Office of Undergraduate Research & Creative Activity (OURCA): Summer Student Research Showcase

Institute for Public Affairs & Civic Engagement (PACE): Free Speech on the College Campus, Campus & Community Networking Lunch

Shore Hatchery Competition

SU AROUND TOWN

29

Fulton Feature Friday: SPH+; Baba Yaga; Sally & Arnaud Perret

Institute of Retired Persons

Modern Languages and Intercultural Studies Department: Community Conversation Hours in Spanish

Philosophy Department: Philosophy Café; Young Thinkers Club; Young Thinkers Festival

INTRODUCING THIS YEAR'S PANORAMA THEME:



LATINIDADES

This year, Salisbury University has chosen the cultural theme of **Latinidades** to showcase the profound influence Latin American and Latino people have across the U.S. and the globe. The Latino population in the U.S. is our nation's fastest growing and largest ethnic group, making up 19.1% of our total population, and this number is expected to grow to 25% in the next few years. **Latinidades** (/ˌlæʈɪnɪˈdædɛs/ plural) as a term can be translated as a **plurality of "latin-ness,"** encapsulating the rich and diverse cultural expressions of Latin American and Latino communities. Going beyond a single identity, it acknowledges the myriad of experiences, traditions and stories of resilience that shape the vibrant tapestry of Latino cultures.

Celebrating **Latinidades** encourages a nuanced exploration of shared heritage and individual strength, drawing attention to unique narratives found within each culture. This includes the voices and traditions of Indigenous and Afro-Latinos, often overshadowed by other perspectives. Embracing this widely influential theme over the course of the next year is an open invitation to explore the dynamic intersections of Latin American and Latino cultures and identities, fostering a deeper understanding and appreciation for the complexities that exist within this mosaic of communities that also make up the fabric of daily life in Delmarva.

Spanish

Este año, la Universidad de Salisbury ha elegido el tema cultural **Latinidades** para mostrar la profunda influencia que tienen los latinoamericanos y latinos en los EE. UU. y el mundo. La población latina en los EE. UU. es el grupo étnico más grande y de más rápido crecimiento de nuestra nación y representa el 19.1 % de nuestra población total, y se espera que este número crezca al 25 % en los próximos años. **Latinidades** (/ˌlæʈɪnɪˈdædɛs/ plural) como término, podría traducirse como una pluralidad de "latinidad" que resume las ricas y diversas expresiones culturales de las comunidades latinoamericanas y latinas. Al ir más allá de una única identidad, reconoce la gran cantidad de experiencias, tradiciones e historias de resiliencia que dan forma al vibrante tapiz de las culturas latinas.

Celebrar las **Latinidades** fomenta una exploración matizada del patrimonio compartido y la fortaleza individual, llamando la atención sobre narrativas únicas que se encuentran dentro de cada cultura. Esto incluye las voces y tradiciones de los indígenas y afrolatinos, que a menudo quedan eclipsadas por otras perspectivas. Adoptar este tema tan influyente en el transcurso del próximo año es una invitación abierta a explorar las intersecciones dinámicas de las culturas e identidades latinoamericanas y latinas, fomentando una comprensión y una apreciación más profundas de las complejidades que existen dentro de este mosaico de comunidades que también conforman el tejido de la vida diaria en Delmarva.

Portuguese

Este ano, a Salisbury University escolheu o tema cultural **Latinidades** para mostrar a profunda influência que os latino-americanos/latinos têm nos EUA e no mundo. A população latina nos EUA é o maior grupo étnico e o que cresce mais rápido em nosso país, representando 19,1% de nossa população total, e espera-se que esse número aumente para 25% nos próximos anos. **Latinidades** (/ˌlæʈɪnɪˈdædɛs/ plural) como termo, pode ser traduzido como uma pluralidade de "latinidade", encapsulando as expressões culturais ricas e diversas das comunidades latino-americanas/latinas. Indo além de uma única identidade, reconhece a infinidade de experiências, tradições e histórias de resiliência que moldam a vibrante tapeçaria das culturas latinas.

Celebrar as **Latinidades** incentiva uma exploração diferenciada da herança compartilhada e da força individual, chamando a atenção para narrativas únicas encontradas em cada cultura. Isso inclui as vozes e tradições indígenas e afro-latinas, muitas vezes ofuscadas por outras perspectivas. Abraçar esse tema amplamente influente ao longo do próximo ano é um convite aberto para explorar as interseções dinâmicas das culturas e identidades latino-americanas/latinas, promovendo uma compreensão e apreciação mais profundas das complexidades que existem nesse mosaico de comunidades que também compõem a estrutura da vida diária em Delmarva.

Haitian Creole

Ane sa a, Inivèsite Salisbury te chwazi tèm kiltirèl **Latinidades** pou montre enfliyans pwofon Ameriken Latin ak moun Latino gen atravè peyi Etazini an ak glòb la. Popilasyon Latino nan peyi Etazini an se nasyon ki pi rapid nou an nan kesyon agrandisman ak pi gwo gwoup etnik ki moute jiska 19.1% nan popilasyon total nou an, epi nimewo sa a espere grandi jiska 25% nan pwochen kèk ane ankò. **Latinidades** (/ˌlæʈɪnɪˈdædɛs/ pliryèl) kòm yon tèm, ta ka tradui kòm yon pliralite nan "latin-ness" ki anglobe ekspresyon kiltirèl ki rich epi ki divès nan kominote Latin Ameriken ak Latino yo. Ale pi lwen pase yon sèl idantite, yo rekonèt plizyè milyon nan eksperyans, tradisyon, ak istwa nan detèminasyon ki fòme tapèri solid la nan kilti Latino yo.

Selebre **Latinidades** ankouraje yon eksplorasyon ki gen divès sans nan eritaj pataje ak fòs endividyèl, desine atansyon sou narasyon inik yo, yo jwenn yo nan chak kilti. Sa a gen ladon vwa yo ak tradisyon Endijèn ak Afwo-Latino yo, souvan yo kouvri akoz yon seri lòt pèspektiv. Lè yo deside trete gwo tèm enfliyans sa a pandan kou a nan ane k'ap vini an se yon envitasyon ki ouvri pou yo ka obsève entèseksyon dinamik yo nan kilti Latin Ameriken ak Latino yo ak idantite yo, sa k'ap favorize yon konpreyasyon ki pi pwofon ak apresyasyon pou sa ki parèt pi konplèks yo ki egziste anndan mozaik kominote sila a sa ki fè tou fabrik lavi chak jou a nan Delmarva.



PLEASE NOTE: ALL EVENTS IN THE PERFORMING ARTS SECTION REQUIRE TICKETS.

All are open to the public. Many are free, but not all.

Each event in this section is labeled to indicate **T= Ticket Needed, F= Free, \$= Not Free**

- All Cultural Affairs and Peter and Judy Jackson Chamber Music Series events in this section are **FREE**, but all require a ticket.
- Music, Theatre and Dance Department events vary in price from free to \$25. Please see the Music, Theatre and Dance Price Chart at the end of this section for price information for each event or visit our box office where you can purchase tickets and get information: salisbury.edu/performingarts



Cultural Affairs

For free required tickets: salisbury.edu/performingarts • For information: **410-548-3586** • salisbury.edu/culturalaffairs

Delmarva Big Band

Wednesday, September 11 • 7:30 p.m.

Holloway Hall, Jackson Family Auditorium • **F|T**

The Delmarva Big Band features 17 of Delmarva's most elite musicians and educators. For this appearance they offer a unique program of classic and contemporary tunes with special touches of Latin flair in celebration of the hallowed Big Band era and this year's *Latinidades* theme.



Tango Lovers – Volver 2

Thursday, October 10 • 7 p.m.

Holloway Hall, Jackson Family Auditorium • **F|T**

Tango Lovers is a company of 23 professional dancers and musicians, hailing directly from Argentina and Uruguay. This production includes the World Tango Dance Champions and features the legendary, multiple award-winning tango singer Guillermo Fernandez. Their captivating "Volver 2" performance boasts a mesmerizing orchestra led by the Grammy and Latin Grammy-winning maestro, Lautaro Greco.



Peacherine Ragtime Society Orchestra

Accompanying the Swashbuckling Adventures of Douglas Fairbanks (1920) in the Silent Classic *The Mark of Zorro*

Friday, November 1 • 7 p.m.

Holloway Hall, Jackson Family Auditorium • **F|T**

The Peacherine Ragtime Society Orchestra is "the premier American ragtime ensemble" as hailed by *The Washington Post*. Peacherine recreates the musical stylings of a bygone era along with underscoring classic silent films using the original orchestral scores. *The Mark of Zorro* is a genre-defining 1920 silent adventure romance film, and the first movie version of the legendary Zorro, defender of the people.

Estonian Rebecca Kontus Trio

Featuring Violinist Kusti Lemba &
Bassist Robert Nõmmann

Wednesday, November 13 • 7 p.m.

Holloway Hall, Great Hall • F|T

Kontus is a composer and singer who is difficult to classify in terms of genre. Her mellow timbre sounds great in jazz; however, the singer has experimented and challenged herself in very different styles, from gospel to rock.

Sponsored by the Office of Cultural Affairs, World Artist Experiences, Inc. and the Embassy of Estonia, Washington, DC.



PETER & JUDY JACKSON CHAMBER MUSIC SERIES

Providing opportunities for live chamber music concerts to be heard and enjoyed on the Eastern Shore.

Brazilian Composer & Pianist

André Mehvari 🌀

Monday, September 30 • 7 p.m.

Holloway Hall, Great Hall • F|T

Renowned pianist Mehvari has forged a language of tremendous expressive power from the resources of Brazilian, jazz and classical music. He deploys his instinct for composition in the writing of new works, arrangements and through interpretation. Widely recognized as an artistic leader of his generation, he has been awarded prizes both in Brazilian popular music and classical music.

Sponsored by the Office of Cultural Affairs, World Artist Experiences, Inc. and the Embassy of Brazil, Washington, DC.



Still Waters Trio 🌀

Tuesday, November 19 • 7 p.m.

Holloway Hall, Great Hall • F|T

Eastern Shore-based Still Waters Trio is Ashley Watkins, flute; Denise Nathanson, cello; and Veronica Tomanek, piano. *shimmer* is a program of diverse repertoire from Louise Ferrenc, Eric Ewazen, Undine Smith Moore, Blaž Pucihar and Astor Piazzolla. From *A Diamond World* to *Full Moon Rising*, spirituals and tango, this program is a tonal reflection of timbres and melodies.

Music, Theatre & Dance


For details & tickets: salisbury.edu/performingarts
(ticket prices are on p. 13)

PETER & JUDY JACKSON MUSIC PROGRAM

Allegheny Ensemble

Wednesday, September 25 • 7:30 p.m.
Holloway Hall, Great Hall • F|T

Amos Lawrence, violin; Yuri Tomenko, viola; and Julie Nishimura, piano, join Sachiho Murasugi, violin, and Jeffrey Schoyen, cello, in a program of music for piano and strings including Schumann's Piano Quintet in E-flat, op. 44, considered one of the masterpieces of the chamber music repertoire. A Student Showcase will also be featured.

Ghost Notes Concert 🎃

Friday, October 25 • 7:30 p.m.
Fulton Hall, Black Box Theatre • \$|T

Join us for our third annual Halloween-themed event. Featuring the Argentinian ensemble Tambor Fantasma; Jeffrey Todd, baritone; Danielle Cumming, guitar; and Eric Shuster, percussion.

Photo Credit: Todd Dudek

Singers' Showcase

Wednesday & Thursday,
October 30 & 31 • 7:30 p.m.
Holloway Hall, Great Hall • \$|T

SU voice majors razzle-dazzle you with their prize-winning renditions of classical, musical theatre and commercial music repertoire in preparation for this year's National Association of Teachers of Singing (NATS) Student Auditions.

Joint Senior Recital

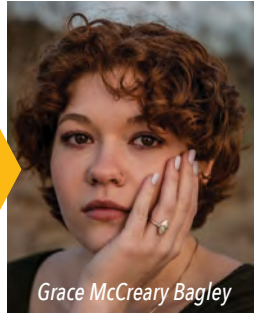
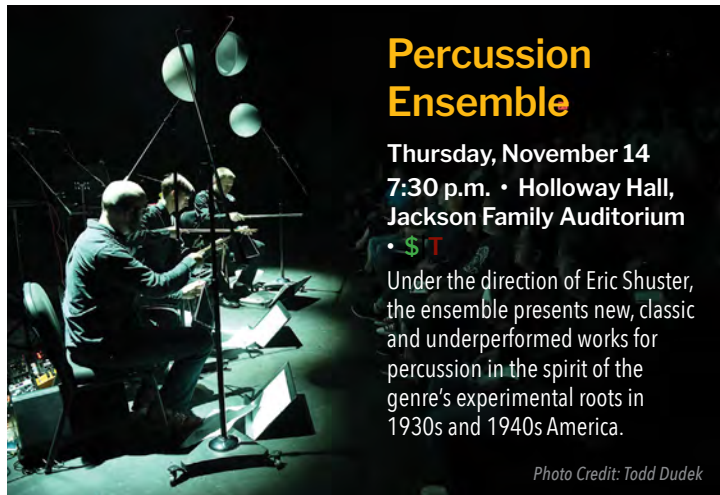
Featuring
Mezzo-Soprano
Rheya Ford & Pianist
Molly Fullerton

Friday, November 8 • 7:30 p.m.
Holloway Hall, Great Hall • F|T



Joint Recital
with Award-Winning
Vocalists *Keilly Wolff &*
Grace McCreary Bagley,
Mezzo-Sopranos

Saturday, November 9 • 7:30 p.m.
Holloway Hall, Great Hall • F|T

Percussion Ensemble

Thursday, November 14
7:30 p.m. • Holloway Hall,
Jackson Family Auditorium
• \$|T

Under the direction of Eric Shuster, the ensemble presents new, classic and underperformed works for percussion in the spirit of the genre's experimental roots in 1930s and 1940s America.

Photo Credit: Todd Dudek

World Drum Ensemble

Saturday, November 16 • 7:30 p.m.
Holloway Hall, Jackson Family Auditorium • \$|T

The World Drum Experience features Latin and African rhythms and classic songs from the 1970s, 1980s and 1990s. The ensemble features Afrobeat, steel drums and the balafon, which is the African marimba. Performances include songs by the Doobie Brothers, Santana, Babatunde Olatunji, Fela Kuti, Mongo Santamariá, Bob Marley, and Blood, Sweat & Tears.

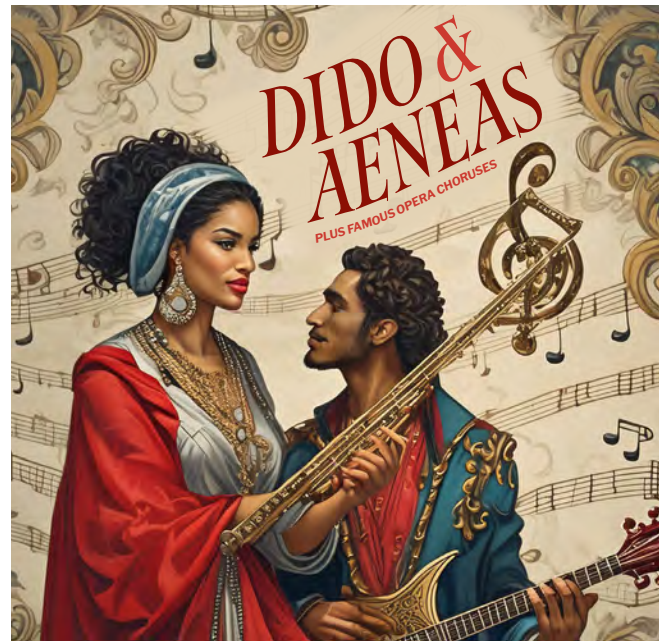


Recital: Eric Gehl, Percussion

Sunday, November 17 • 2 p.m.
Holloway Hall, Jackson Family Auditorium • F|T

Piano & Strings Recital

Friday, November 22 • 2 p.m.
Holloway Hall, Great Hall • F|T



Opera Through the Ages!

John Wesley Wright & William M. Folger, Artistic Directors
Saturday-Sunday, November 23-24* • 7:30 p.m. & *4 p.m.
Holloway Hall, Jackson Family Auditorium • \$|T

SU's Opera Theatre in collaboration with University and Salisbury Chorales presents a solo and choral extravaganza featuring Purcell's baroque opera masterpiece *Dido and Aeneas* and highlighting iconic choruses from opera's most beloved and recognizable literature.



Salisbury Pops

Tuesday, December 3
7:30 p.m.
Holloway Hall, Jackson Family Auditorium • \$|T

Join the Salisbury Pops as they take you on a sleigh ride with seasonal music and a visit from Santa!

Music, Theatre & Dance

For details & tickets: salisbury.edu/performingarts
 (ticket prices are on p. 13)

Jazz Ensemble

Thursday, December 5 • 7:30 p.m.
 Holloway Hall, Jackson Family Auditorium • \$|T

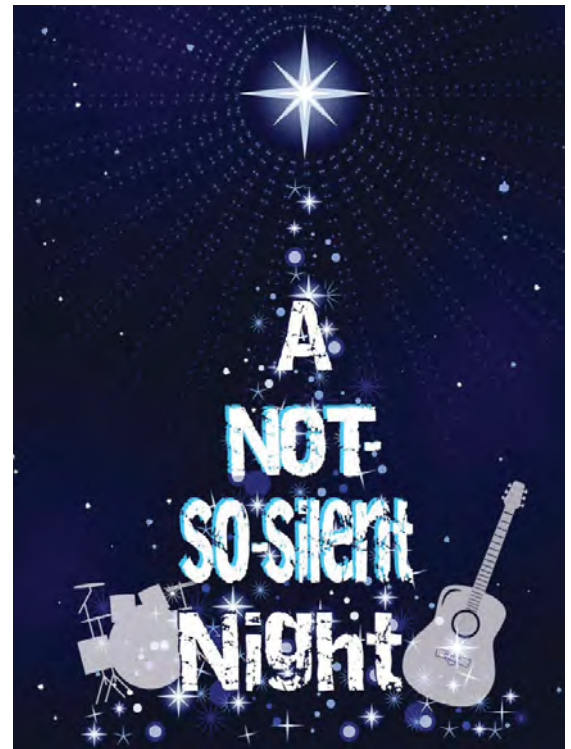
The SU Big Band returns with classic and contemporary vocal and instrumental jazz featuring vocalists Keily Wolff and Grace McCreary Bagley alongside student and community instrumentalists. Also featured are original compositions by director Jerry Tabor.



Vox Concordia Presents Winter Reflections

Sunday, December 8 • 4 p.m.
 Holloway Hall, Great Hall • \$|T

Vox Concordia, a 25-member chamber choir under the direction of Veronica Tomanek, presents *Winter Reflections*, an international and stylistic exploration of seasonal music, including settings of European and South American carols, Renaissance and Baroque music, and poetry of Robert Frost, and featuring SU faculty guitarist Danielle Cumming and percussionist Eric Shuster.



A Not-So-Silent Night

Wednesday, December 11 • 7:30 p.m.
 Fulton Hall, Black Box Theatre • \$|T

Get in the holiday spirit with "A Not-So-Silent Night," featuring a soulful collaboration between Mama's Black Sheep and the Christine Havrilla Duo! The artists play their versions of your holiday favorites, as well as some of their most popular original songs!

PRESTO

Learn more and register for fall classes: salisbury.edu/presto

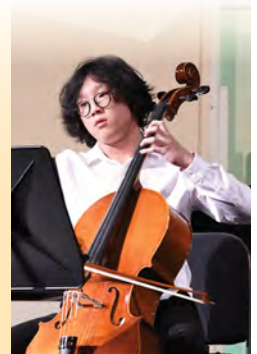
Lessons

September 9-December 2

Through a 12-week session, PRESTO offers learners of all ages individual lessons in piano, strings, voice, guitar, percussion, music theory, and some wind and brass instruments.

PRESTO Recital

Tuesday, December 10
 5 p.m. & 7 p.m. • F
 Holloway Hall, Great Hall





Salisbury Youth Orchestra

Thursday, December 12 • 7:30 p.m.
 Holloway Hall, Jackson Family Auditorium • \$|T

Flute Ensemble

Sunday, December 15 • 2 p.m.
 Holloway Hall, Great Hall • F|T



SALISBURY SYMPHONY ORCHESTRA



Classic Masterworks: Mozart and More Featuring Dwight Parry, Oboist

Saturday, October 12
 7:30 p.m.
 Holloway Hall, Jackson Family Auditorium • \$|T

Parry is principal oboist of the Cincinnati Symphony Orchestra, former principal oboist of the San Diego Symphony and a fellow with the New World Symphony. He was guest principal oboist with the New York Philharmonic, Philadelphia Orchestra, Chicago Symphony, LAFil, Minnesota Orchestra, San Francisco Symphony and many others!

Holiday Concert: Songs of the Season Featuring Melissa Harvey, Soprano

Saturday, December 7 • 7:30 p.m.
 Holloway Hall, Jackson Family Auditorium • \$|T

Harvey received her Master of Music (M.M.) in voice from the University of Cincinnati College-Conservatory of Music. She has performed with Catacoustic Consort, The Bach Society, Collegium Cincinnati, Bourbon Baroque, Cincinnati Vocal Arts Ensemble and the Findlay Orchestra. This is Harvey's third time ringing in the holidays with the SSO.



Music, Theatre & Dance

For details & tickets: salisbury.edu/performingarts

BOBBI BIRON THEATRE PROGRAM

Fefu & Her Friends

By María Irene Fornés

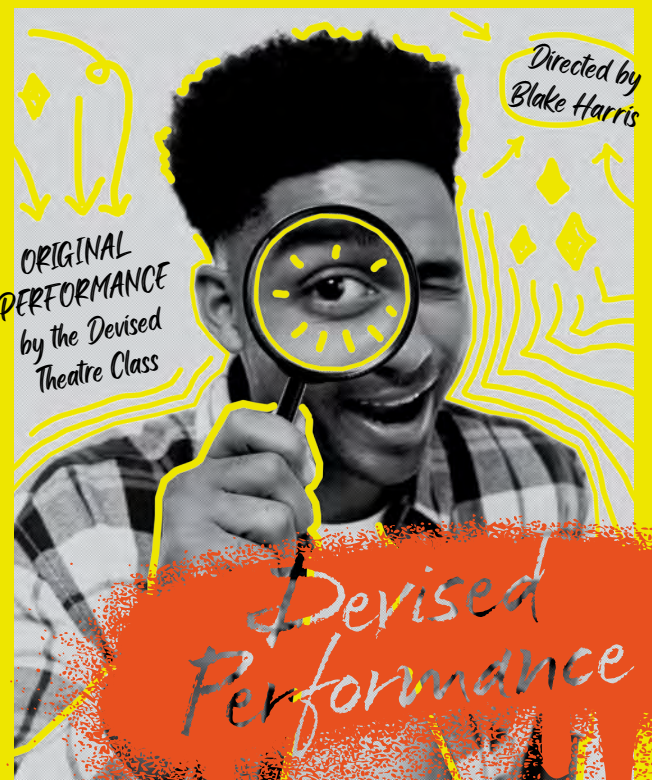
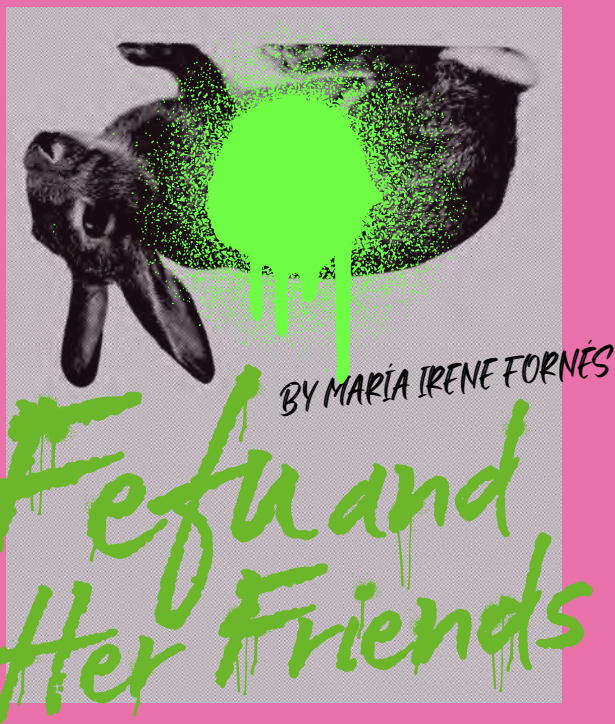
Directed by Jamie McKittrick

Thursday-Sunday, October 10-13*

7:30 p.m. & *2 p.m.

Fulton Hall, Black Box Theatre • \$|T

Eight exceptional women gather at the home of their brilliant friend during the 1930s in this masterpiece of feminist theatre by María Irene Fornés. Fornés was a Cuban-born playwright whose work irrevocably altered the trajectory of modern theatre. The promenade style of *Fefu and Her Friends* still feels relevant 50 years later.



Devised Performance

Saturday, December 7 • 7:30 p.m.

Fulton Hall, Black Box Theatre • F|T

Experience the culmination of the Devised Theatre students' original performance, where they've merged their personal backgrounds and interests into an invigorating collision of ideas. Daring, bold and never-before-seen, this performance is unlike any other offered this season.

DANCE PROGRAM

SU Dance Company Fall Student Showcase

Directed by Helen Myers

Friday-Sunday, November 1-3*

7:30 p.m. & * 2 p.m.

Fulton Hall, Black Box Theatre • \$|T

The SU Dance Company's fall concert features works choreographed by members of the Dance Company.



Music, Theatre & Dance TICKETING INFORMATION

Tickets are required for ALL EVENTS.
See pricing information for individual events below.

To purchase in-person & livestream tickets, visit: salisbury.edu/performingarts



FREE For All, But Tickets Are REQUIRED

- Allegheny Ensemble Concert
- Piano/Strings Recital
- Student Recitals
- Devised Performance
- Flute Ensemble

General Public \$25, Senior \$20, Faculty/Staff \$10

- Salisbury Symphony Orchestra - Fall Concert
- Salisbury Symphony Orchestra - Holiday Concert

General Public \$15, Senior \$10, Faculty/Staff/Students \$5

- Fefu & Her Friends
- Fall Dance Concert
- Vox Concordia

General Public \$10, Senior \$5, Faculty/Staff Free

- Ghost Notes
- Singers' Showcase
- Percussion Ensemble
- World Drum Experience
- Jazz Ensemble
- Salisbury & University Chorales
- Opera Through the Ages!
- Salisbury Pops Concert
- A Not-So-Silent Night

General Public \$5, Senior \$3, Faculty/Staff Free

- Salisbury Youth Orchestra

Art Department & SU Art Galleries

For hours & visit details: suartgalleries.org

Conversations: Stop Motion Animation by New Media Art Students

Through September 14 • Conway Hall, Gallery 128

Artist Talk, Workshop & Closing Reception:

Thursday, September 12 • 5:30 p.m. • Conway 156

New Media Art Professor David Gladden and students Jeremy Boyden, Sarah Bylan, Bryleigh Foreman and Isabel Wells present a talk and workshop during Sophomore Seminar with a reception to follow.



Muriel Hasbun: With the Pulse of a Community / Con el pulso de una comunidad 🌀

August 26-October 26

SU Art Galleries | Downtown

Artist Talk & Workshop:

Thursday, September 19 • 5:30 p.m.

Exhibition Reception:

Friday, September 20 • 5-7 p.m.

A multimedia exhibition – including photographs, video, archives and sculptural installations – representing 35 years of investigation toward processing ideas of home, exile, the traumas of war, and the endurance of identity and memory. Based on memories of El Salvador during the Civil War, Hasbun's work coalesces rediscovered artifacts into works of reconciliation where truths about war and legacy are rendered into new work. Essay by Andy Grundberg.

Muriel Hasbun Closing Reception & Close, Slow Looking 🌀

Jayne McLellan, Curator & Acting Director,
University Galleries

Saturday, October 26 • 2 p.m. • SU Art Galleries | Downtown

Join Jayne McLellan, curator and acting director, University Galleries, for a closing reception and *Close, Slow Looking* program where the curator unpacks and discusses selected works from the show, *Muriel Hasbun: With the Pulse of A Community / Con el pulso de una comunidad*. This program is an opportunity to learn, share and create community.

John Mosher: *Wanderer*

September 16-December 20
Fulton Hall, University Gallery

Exhibition Reception & Artist Talk:

Thursday, October 24 • 5-7 p.m.

Wanderer is an exhibition by art professor Mosher, fresh from his sabbatical. It features a variety of mediums including collage, painting, drawing, found objects, video and installation. Each piece serves as a fragment in a larger narrative telling the story of the Wanderer.



Ashley Moog Bowsbey *Visiting Artist Talk*

Thursday, September 26 • 5:30 p.m.
Conway Hall 156

Moog Bowsbey is a lens-based artist living in southeastern Pennsylvania. She specializes in analog and digital photography, digital fine art printing, bookmaking, and basic printmaking processes. Moog Bowsbey's work is emotionally driven, often focusing on topics of family, home, loss, grief and personal struggles examining issues of body image and feminine beauty ideals.



Johab Silva *Visiting Artist Talk* 🌀

Thursday, October 3 • 5:30 p.m. • Conway Hall 156

Washington, DC-based Brazilian visual artist and art educator Silva uses new media to respond to urban development issues in green regions. Silva holds an M.F.A. from Maine College of Art and Design and an M.A.T. from Corcoran College of Art and Design. His works have been exhibited nationally and internationally, and reviewed in *The Washington Post*, *Sculpture Magazine* and PBS.

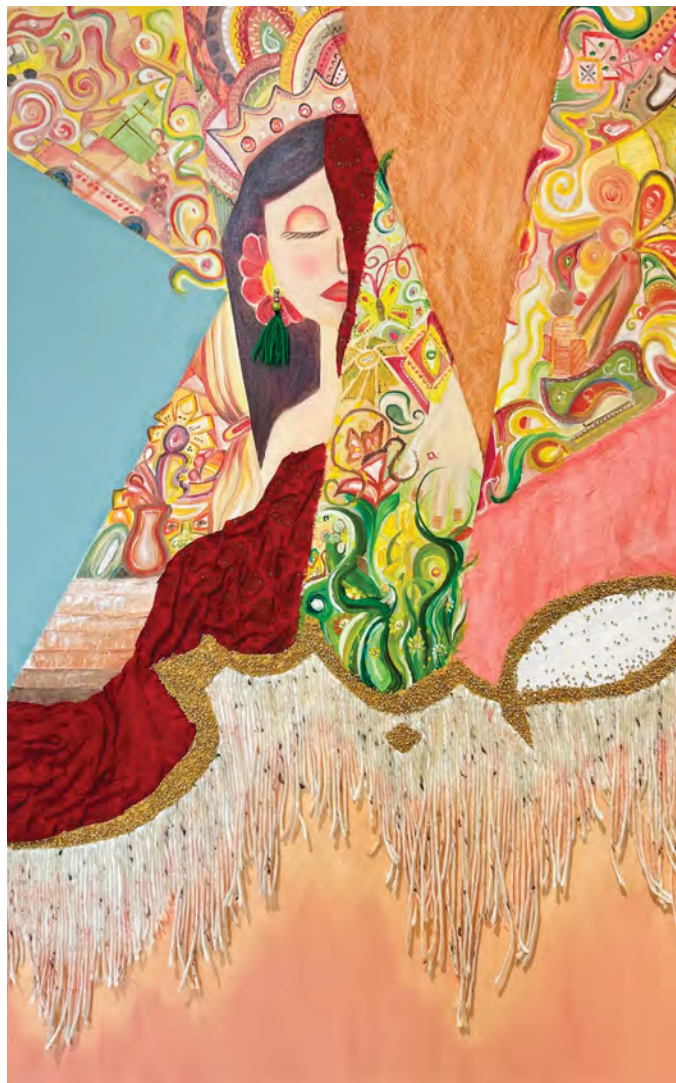
Art Department & SU Art Galleries

For hours & visit details: suartgalleries.org

Cara Ober & Raquel Castedo, **BMore Art Magazine** **Visiting Artist Talk**

Thursday, October 17 • 5:30 p.m.
SU Art Galleries | Downtown

Ober (editor-in-chief) and Castedo (creative director) of *Bmore Art Magazine* discuss publishing and their most recent and largest publishing effort to date, *Baltimore: City of Artists*.



71st Senior Exhibition: **Fine Arts & Graphic Design**

November 11-December 15
SU Art Galleries | Downtown

Awards Reception:

Friday, November 22 • 5-7 p.m.

Art majors present their capstone projects as part of the Senior Exhibition course, led by Professor Jinchul Kim. This course provides a platform for students to showcase their skills and knowledge in art through the planning and execution of a professional art exhibit and displays their artistic growth throughout their academic journey.



Cara Wade **Faculty Artist Talk**

Thursday, November 14
5:30 p.m.
Conway Hall 156

Using traditional black and white techniques, and alternative 19th century photographic processes with a 21st century spin, Wade attempts to tangibly express the circumstances that both plague and stimulate her.

Guerrieri Student Union Art Space

For information: salisbury.edu/guc/artspace • 410 543 6274

Guerrieri Student Union, Second Floor Lounge

Each month, the Guerrieri Student Union Art Space showcases the work of talented SU art students. In addition, the Art Space website features the current artists and their exhibition, as well as the exhibition schedule and a gallery of all the artists, their artwork and their price lists:



Brea Branche

Allow Yourself to Be (PAINTING)
August 30-September 27



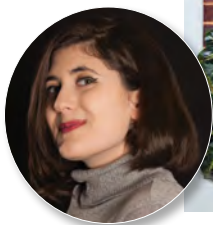
Rachel Carbo

Looking Without Seeing (PAINTING)
September 30-October 31

Delaney Cinnamon

Derivatives of Emotion
(PAINTING)

November 1-December 6



Nabb Research Center for Delmarva History & Culture

For information: salisbury.edu/nabb

The Bigger Picture of Aerial Photography

Beginning Monday, August 26 • Monday-Friday • 10 a.m.-4 p.m.
Guerrieri Academic Commons, Thompson Gallery, 4th Floor

Using aerial photos from the Nabb Center archives, this exhibit explores the history of aerial photography from hot air balloons to present day. Learn about the many uses of aerial photography and understand just how important it is to see the world from above.



Enduring Connections, Enduring Legacies: Black Histories on Delmarva in the Late 19th Century

Beginning Monday, August 26
Open During Guerrieri Academic Commons Hours
Guerrieri Academic Commons, 1st Floor Lobby

Explore the histories of Black individuals and families on Delmarva during the late 19th century, a crucial time of transition. This exhibit showcases some of their records and stories that can be found on the Nabb Center's online project *Enduring Connections: Exploring Delmarva's Black History*.



Film at Fulton

For information: **410-543-6229**

Fulton Hall 111 – Herman van Apeldoorn Film Center

This series fosters the collective viewing and discussion of exciting films on campus. Each film is chosen for its artistic and thematic resonance and is followed by a panel discussion.

Argentina, 1985 🌀

Directed by Santiago Mitre

Argentina, 2022, Rated R

Sunday, September 8 • 3 p.m.

In the mid-1980s, the Argentinian people suffer under the ruthless reign of a brutal military dictatorship. Determined to improve the livelihoods of their countrymen, a team of lawyers risk their lives to confront the nation's oppressors. In the words of Guy Lodge (*Variety*), this is "a people's film about people's justice, balancing tear-jerking historical catharsis with touches of droll domestic comedy."



El Norte 🌀

Directed by Gregory Nava

U.S./Mexico, 1983, Rated R

Sunday, October 6 • 3 p.m.

Brother and sister Enrique and Rosa flee persecution at home in Guatemala and journey north, through Mexico to the United States, with the dream of starting a new life. It's a story that happens every day, but until Gregory Nava's groundbreaking *El Norte* (*The North*), the personal travails of immigrants crossing the border to America had never been shown in the movies with such urgent humanism.



Tótem 🌀

Directed by Lila Avilés

Mexico, 2023, Not Rated

Sunday, November 3 • 3 p.m.

In a bustling Mexican household, seven-year-old Sol is swept up in a whirlwind of preparations for her terminally ill father's birthday party. As the day goes on, Sol and her family begin to understand the gravity of the celebration. Director Lila Avilés orchestrates a dynamic ensemble cast in this warmly observed, poignantly funny and emotionally expansive study of the ways we cope with grief.



Writers on the Shore

For registration & information: **410 543 6445**

Creative Writing Festival

Wednesday, September 11 • 8 p.m.

Perdue Hall 156

SU students read selections from their work and welcome new students. Hosted by senior creative writing student Colleen Salisbury.

Ryan Habermeyer

Wednesday, September 25 • 8 p.m.

Commons, Worcester Room

Habermeyer is the author of the short story collections *Salt Folk* and *The Science of Lost Futures*. His works have been widely published in such literary journals as *Conjunctions*, *Alaska Quarterly Review*, *Massachusetts Review* and *DIAGRAM*. A Fulbright scholar who has lived, taught and studied in Poland, Scotland, Spain and Mexico, he is an associate professor of English at Salisbury University.



Rachel M. Hanson

Wednesday, October 9 • 8 p.m.

Commons, Worcester Room

Hanson is the author of *The End of Tennessee: A Memoir*, and her nonfiction has won Best of the Net. Her work can be found in *Creative Nonfiction*, *The Iowa Review*, *Ninth Letter* and elsewhere. She is an assistant professor of English at the University of North Carolina - Asheville and is the executive director of the literary nonprofit organization Punch Bucket Lit.

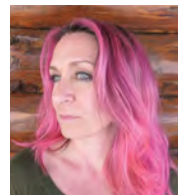


Victoria Lancelotta

Wednesday, October 23 • 8 p.m.

Commons, Worcester Room

Lancelotta's newest book, *Ways to Disappear*, won the Fiction Collective 2 Catherine Doctorow Innovative Fiction Prize. She is the author of *Here in the World: 13 Stories* and the novels *Far* and *Cœurs Blessés*. She is the recipient of a Tennessee Individual Artist Fellowship, multiple Maryland State Arts Council Individual Artist Grants and a National Endowment for the Arts fellowship.



Sarah Barber

Wednesday, November 13 • 8 p.m.

Commons, Worcester Room

Barber holds an M.F.A. from the University of Virginia and a Ph.D. from the University of Missouri-Columbia. She is associate professor of English at St. Lawrence University in Canton, NY. Her poems have appeared in journals such as *New Ohio Review*, *Columbia Poetry Review* and *Crazyhorse*, and she is author of two collections: *Country House* and *The Kissing Party*.



Environmental Studies Colloquia

For information: **410 548 3848**

Internship Experiences

Wednesday, September 4
Perdue Hall 156 • 7 p.m.

Students share their internship experiences from the past year. Hear their stories and learn about possible internship opportunities! Geared toward SU students.

Immigration & Health in Rural Maryland

Wednesday, October 2
Perdue Hall 156 • 7 p.m.

Thurka Sangaramoorthy of American University discusses the intertwining of health care corporatization and immigration policies in rural America. Drawing from fieldwork on Maryland's Eastern Shore, she explores how these factors shape a "landscape of care," revealing shared challenges and forms of resilience among immigrants and rural residents globally.

Maryland Climate Policy

Wednesday, October 23
Perdue Hall 156 • 7 p.m.

Kathleen Kennedy, assistant research professor at the University of Maryland's Center for Global Sustainability, shares her experience working with the Maryland Department of Environment to develop Maryland's Climate Pollution Reduction Plan.

Fulton Public Humanities

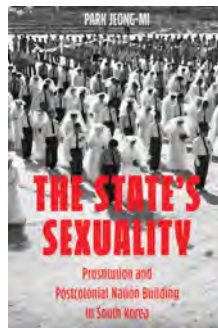
For information: salisbury.edu/public-humanities

Book Talk: The State's Sexuality: Prostitution & Postcolonial Nation Building in South Korea

Tuesday, October 8 • 6 p.m.
Conway Hall 153

Jeong-mi Park explores complex dynamics of women involved in prostitution in South Korea. Despite marginalization, these women have played a strategic role in postcolonial nation-building efforts. The South Korean state employed laws and regulations, excluding sex workers from citizenship while utilizing their labor for national security, development and the formation of a gender-specific citizenry.

Co-sponsored by the Political Science Department and International Studies Program



Buddha on the Silver Screen

Wednesday, November 6 • 6:30 p.m.
Fulton Hall 111 – Herman van Apeldoorn Film Center

Buddhism has fascinated filmmakers and lay persons for a very long time. Sharon A. Suh (professor of theology and religious studies, Seattle University) discusses the various ways race, gender and Buddhism have been portrayed in Asia and the global West. Her presentation features clips from some of the most iconic films about Buddhism.

Co-sponsored by the Office of Diversity and Inclusion



Latin American & Latinx Symposium

Saturday, December 7 • 9 a.m.-2 p.m.
Perdue Hall Atrium &
Bennett Family Auditorium

Conducted in Spanish & English

The symposium features students' research and creative projects on cultural expressions in different formats, including posters and pre-recorded and in-person presentations. The symposium fosters critical views on marginalization in the Spanish-speaking world in conversation with contemporary events.

Sponsored by Fulton Public Humanities and Modern Languages and Intercultural Studies Department.



Fulton School of Liberal Arts

For information: **410 543-6450**



Fulton Faculty Colloquium

First Tuesday of the Month • 3:30 p.m. • Conway Hall 152

■ **Tuesday, September 3**

Emin Lelić (History): A Window into the Soul of the Ottoman Empire

John Mosher (Art): "Wanderer" Narrative-Based Art Exhibition

■ **Tuesday, October 1**

Fulbert Namwamba (Environmental Studies & Geography): Sustainability Along the Kenyan Nzoia River Watershed and SU Study Abroad Course

Janice Schreiber (Music): Music Therapy Drum Circles with Police and BIPOC (Black, Indigenous and other People of Color) Youth

■ **Tuesday, November 5**

David Burns (Communication): The New Graduate Program in Public Communication

Diane Illig (Sociology): The Plight of Academic Chairs: Liminality, Accountability and Authority

■ **Tuesday, December 3**

Michèle Schlehofer (Psychology), **Timothy Stock** (Philosophy), **Jennifer Nyland** (Biology): Universities as Places of Community Enfranchisement: Salisbury University's REACH Initiative

Henson School of Science & Technology

For registration & information: rmshifler@salisbury.edu

Henson Seminar Series

Who? How? When? Contributions of Forensic Anthropology & Forensic Odontology to Casework

Thursday, October 3 • 4 p.m. • Henson Science Hall 243

Joe Adserias-Garriga (Department of Applied Forensic Sciences, Mercyhurst University) discusses the value and contributions of forensic anthropology and forensic odontology to casework, illustrated by forensic cases conducted by the Department of Applied Forensic Sciences team at Mercyhurst University.

Sponsored by the Richard A. Henson School of Science and Technology.



Joe Adserias-Garriga

Modern Languages & Intercultural Studies Department

For information: **410-543-6341**

Languages Across the Disciplines

Monday, September 23 • 6 p.m. • Conway Hall 156

Did you know that learning another language can help you, no matter what you study? Listen to Associate Professor of History Belen Vicens Saiz and Associate Professor of Marketing Memo Diriker discuss how language learning has impacted their professional and personal lives.



Belen Vicens Saiz



Memo Diriker

Institute for Public Affairs & Civic Engagement (PACE)

For information: salisbury.edu/pace

Democracy Across the Disciplines Lecture Series

MONDAYS • 7-8:30 p.m. • Perdue Hall 156

- **September 9** – *Effective Advocacy for Social and Political Issues*
- **September 16** – *Effective and Accountable Institutions: Governance in a Democracy*
- **September 23** – *Sustainable Communities: The Role of Government in Planning for the Environment*
- **September 30** – *Resilient Cities: The Role of Housing and Community Development*
- **October 7** – *Peace and Justice: Legislating for Reform*
- **October 14** – *Public Trust: Effective and Accountable Elections*
- **October 21** – *Public Freedom and Ballot Access: Elections and Those Who Run Them*
- **October 28** – *Responsive Decision-Making: Elections and Those Who Run in Them*
- **November 4** – *The Year of Democracy: Public Discussions about the 2024 General Election*
- **November 11** – *Representation in Leadership and Decision-Making: Experiences Advocating for Gender Equality and Reproductive Rights*
- **November 18** – *Safe and Responsible Movement: Migrant Rights in a Period of Increased Immigration*
- **November 25** – *Universal Inclusion: The Social, Economic and Political Impacts of LGBTQ+ Rights*
- **December 2** – *Student Loan Forgiveness: Should Higher Education in a Democracy Be Free?*
- **December 9** – *After the Year of Democracy: Productive Partnerships for 2025*



Seidel School of Education

For information: [410-543-6335](tel:410-543-6335)

E. Pauline Riall Lecture Series

Diane Ravitch

Tuesday, October 8 • 7 p.m.

Holloway Hall, Jackson Family Auditorium & Social Room

Ravitch, a champion for public schools across the country and the nation's leading advocate for public education, draws on over 40 years of research and experience. The lecture will be followed by a reception and book signing. Her years of experience working in the government shaped her approach to education and gave her a unique and powerful perspective, which she brings into all aspects of her work. A prolific writer and a renowned research professor of education at New York University, Ravitch publishes more than 500 articles and reviews for scholarly and popular publications. Her blog is one of the primary destinations for American educators, which has received more than tens of millions of views since 2012.



Diane Ravitch

Native American Heritage Month

NATIVE AMERICAN LANDS AND LANDSCAPES

Fulton Public Humanities Program

For information: salisbury.edu/public-humanities

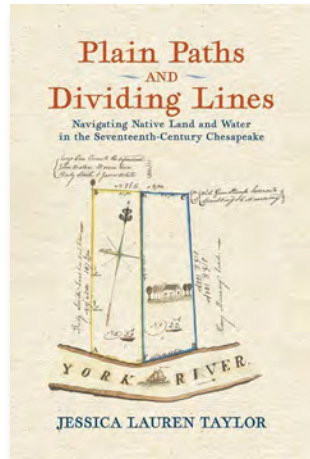
Jessica Lauren Taylor Lecture

Plain Paths & Dividing Lines:
How Southeastern Travelers Challenged Colonial Authority in the Early Chesapeake

Thursday, September 26 • 7 p.m.
Conway Hall 153

Algonquian connections continued to define the watery Chesapeake landscape, even as Virginia and Maryland planters erected fences and forts, policed unfree laborers and Native neighbors, and dispatched land surveyors. Taylor (Virginia Tech University) discusses her 2023 book *Plain Paths and Dividing Lines: Navigating Native Land and Water in the Seventeenth-Century Chesapeake*.

Sponsored by the Nabb Research Center, Fulton Public Humanities and History Department.



River Networks & Ancestral Pathways:

The Cultural Heritage of Rivers in the Pocomoke Indian Nation's Sphere of Influence

Wednesday, November 13 • 7 p.m.
Conway Hall 153

Wicomico, Rockawalkin, Wighcocomoco, Pocomoke. Familiar local monikers have a complex history that members of the Pocomoke Indian Nation have been researching through colonial-era documents. This presentation takes you on a journey along the rivers, paths and bridges that composed the Pocomoke and other Algonquian groups' ancestral landscapes, and still shape our familiar surroundings.

Sponsored by the Nabb Research Center, Fulton Public Humanities and History Department.



Adventures in Ideas Humanities Seminar

For information: salisbury.edu/humanities-seminars

Land & Water Protectors: *Native Americans & the Environment*

Saturday, November 2 • 10 a.m.-2 p.m.
Conway Hall 179

Native Americans' relationships to nature have long been a source of fascination, misunderstanding and criticism for non-Indigenous people. Today, Indian peoples in North America are finding themselves on the front lines of the climate crisis, not only as victims but also as activists and solution-makers. SU professors Céline Carayon (History) and Stephanie Bernhard (English) explore the historical and contemporary dimensions of Native American environmentalisms and what they have to teach us for the future.

Sponsored by the Fulton School of Liberal Arts and the Whaley Family Foundation.

TICKETS: \$30/\$50 for 2

RESERVE TICKETS: 410-677-5070 • jhabermeyer@salisbury.edu

Continental breakfast & light lunch included



Hispanic Heritage Month

Modern Languages & Intercultural Studies Department

For information: [410-543-6341](tel:410-543-6341)

Festival Latino! 🎉

Saturday, October 5 • Noon-3 p.m.

Fulton Hall Fountain & Lawn

(Rain Location: Holloway Hall, Great Hall)

SU celebrates Hispanic Heritage Month with vendors, food, live music and dancing. Free, family-friendly, and open to everyone on campus and in the community. High school seniors can enter a raffle for an SU scholarship. Enjoy authentic food, plus take home a box of food from the Maryland Food Bank.

- Noon-1:30 p.m. • Radio Máxima 95.3
- 1:30-3 p.m. • Banda Musica TBA



Sponsored by the Modern Languages and Intercultural Studies Department, Fulton School of Liberal Arts, College Assistance Migrant Program, Latin American Studies Program, Sociology Department, Office of Diversity and Inclusion, Admissions Office, TRIO Student Support Services, and Organization of Latin American Students.

National Disability Awareness Month

Office of Diversity & Inclusion

For information: salisbury.edu/diversity



Film Screening: *Hearts of Glass*

Tuesday, October 15 • 7 p.m.

Fulton Hall 111 – Herman van Apeldoorn Film Center

Hearts of Glass is an intimate portrait of social entrepreneurship at the intersection of disability rights and sustainable, local food production. It follows the first 15 months of operation of Vertical Harvest (VH), a multi-story hydroponic greenhouse that grows crops while providing meaningful jobs for people with disabilities.

Sponsored by PACE, the Office of Diversity and Inclusion, Disability Resource Center, and Perdue School.

For information on OUTober, Latinx and Native American Heritage Month events, visit the Office of Diversity and Inclusion webpage:



Fulton School of Liberal Arts

For information: **410 543 6450**

Panorama & Cultural Fellowship Program Launch!

**Wednesday, August 28 • 5-6 p.m.
Holloway Hall, Social Room & Great Hall**

Pick up your newest edition of *Panorama* and celebrate another year of fantastic cultural events at SU! We will showcase new *Panorama* features and event logistics, introduce our Cultural Fellowship Program, and highlight a new course, Embracing Wonder: Experiencing Art and Culture on Campus. This seven-week course, open to campus and community, invites students to embark on a journey through SU's vibrant world of art and culture using *Panorama* as a guide. For information visit salisbury.edu/cultural-affairs



FALL FOR FULTON

**Friday, October 25 • 11 a.m.-3 p.m.
Fulton Hall Fountain & Lawn
(Rain Location: Fulton Hall Lobby)**

As part of SU's Alumni Homecoming tradition, celebrate the Fulton School of Liberal Arts, which plays a vital role in the academic experience of nearly every SU student as home to the visual and performing arts, the humanities, and the social sciences.

Prospective students should register in advance at:



Fulton Job & Internship Prep Fair

Wednesday, September 25 • Noon-3 p.m. • Link of Nations (Connecting Commons & Guerrieri Student Union)

Co-sponsored by the Fulton School of Liberal Arts and SU Career Services, this fair includes 20 different Fulton-based internship programs for our majors and minors, and helps students explain their educational skills to potential employers and graduate schools. Participating students will be prepared to attend fall and spring Career Services workshops and job/internship fairs.

Fulton School of Liberal Arts

CORE COMPETENCIES



One Maryland One Book

The One Maryland One Book (OMOB) program encourages Marylanders to read and discuss the same book. This year's book, *What Storm, What Thunder* by Myriam J.A. Chancy, presents a fictionalized account of characters impacted by a 7.0 magnitude earthquake in Haiti. The book balances the heartbreaking trauma of disaster with the tenacity of the human spirit.



SCAN TO REQUEST YOUR FREE BOOK COPY:

OMOB Panel Discussion

Tuesday, October 22 • 7 p.m.

Guerrieri Academic Commons, Assembly Hall

Join a panel discussing several themes of the book, including Haitian culture and history, earthquakes and environmental disasters, and political and gendered violence. Panelists include Reverend Roosevelt Toussaint, President of the Haitian Development Center of Delmarva and Minister at the Word of Life Center; SU faculty Arnaud Perret of Modern Languages and Intercultural Studies; April Logan of English, Africana Studies, and Gender and Sexuality Studies; and Stephanie Bernhard of English and Environmental Literature.



Shore Hatchery Competition

For registration & information:

shorehatchery.salisbury.edu

REGISTRATION OPENS:

Monday, August 12 • 12:01 a.m.

REGISTRATION CLOSES:

Monday, September 23 • 11:59 p.m.

COMPETITION DATE:

Friday, November 1

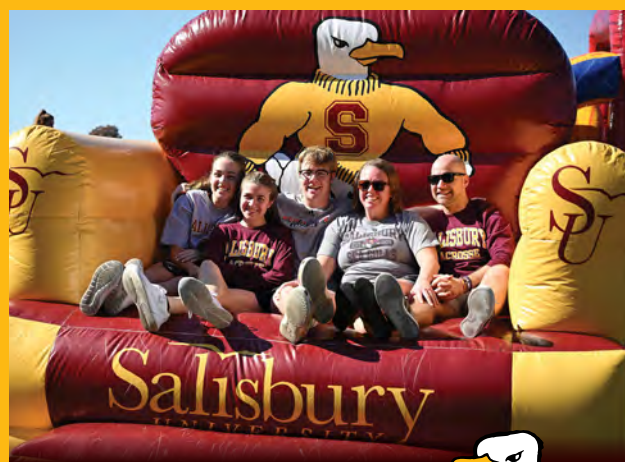
The Philip E. and Carole R. Ratcliffe Foundation Shore Hatchery is a bi-annual Mid-Atlantic startup competition. The 13-year, \$2.9 million initiative began in 2013. Startups apply for a share of \$200,000 annually. The program's goal is to foster new businesses and jobs, aiming to benefit the region within three years.



SHORE HATCHERY
Salisbury University
Perdue School of Business

Alumni Homecoming & Family Weekend

Monday-Sunday, October 21-27



For full event list and information:
salisbury.edu/homecoming



Nabb Research Center for Delmarva History and Culture

For information: salisbury.edu/nabb

Nabb Center at Homecoming Flock Party

Saturday, October 26 • 11 a.m.-2 p.m.

Wayne Street in front of Sea Gull Stadium

Enjoy activities from the University Archives. Create your own button and help us identify mystery photos or just flip through past yearbooks. Banners from our "By-Gone Buildings" exhibit will also be set up across campus. Complete our in-person scavenger hunt with the banners throughout the week leading up to Homecoming and win a prize.

Office of Diversity & Inclusion

For information: salisbury.edu/diversity

CultureFest!

Friday, October 4 • 3-5 p.m.

Guerrieri Student Union, Wicomico Room

Celebrate the diversity within all of us with live music, entertainment, food and games. CultureFest offers individuals a chance to interact with members of numerous multicultural organizations.



Office of Cultural Affairs & Office of Diversity & Inclusion

For information & details: salisbury.edu/cultural-affairs or call 410 548 3586

Omari Banks Concert 🌍

Thursday, September 19 • 7:30 p.m.

Holloway Hall, Jackson Family Auditorium

FREE and Open to the Public. NO TICKETS REQUIRED.

Join us for this special concert! Straight from the beautiful island of Anguilla in the Caribbean, Banks and his band play a fusion of traditional Jamaican Reggae accentuated with Rock and Blues backbeats.

Talk on the African Diaspora in the Caribbean by Omari Banks 🌍

Friday, September 20 • Noon

Perdue Hall 348

FREE and Open to the Public.

Omari Banks events are sponsored by the Office of Cultural Affairs, the Office of Diversity and Inclusion, SU President Emerita Janet Dudley-Eshbach, the Office of the President, and the Fulton School of Liberal Arts.



© Marta Federici

Modern Languages & Intercultural Studies Department

For information: **410-543-6341**

Festival Latino! 🌍

Saturday, October 5 • Noon-3 p.m.

Fulton Hall Fountain & Lawn

(Rain Location: Holloway Hall, Great Hall)

Details available in the Heritage Months section on page 23.

Office of Undergraduate Research & Creative Activity (OURCA)

For information: **410-546-1674**

Summer Student Research Showcase

Thursday, August 29 • 3:30-5 p.m.

Guerrieri Academic Commons, Assembly Hall

Learn about student research and creative activities conducted over the summer. Student researchers from all academic disciplines present posters and discuss their scholarship at this interactive event. Those interested in research and creative activities are strongly encouraged to attend.



Maryland Folk Festival

For information: **mdfolkfest.com**

Friday-Sunday, September 20-22
Downtown Salisbury

A free, large-scale outdoor event, the Maryland Folk Festival features some of the nation's finest traditional musicians, dancers, craftspeople and other keepers of culture in performances, workshops and demonstrations, and more.



Sea Gull Century

For information & registration: **seagullcentury.org**

Friday-Saturday, September 27-28

Sea Gull Century is a nationally acclaimed bicycling event, beginning and ending on the campus of Salisbury University. SGC has two routes: the Assateague Century (100 miles) and Princess Anne/Pocomoke Metric (63 miles.) Each route tours the picturesque Eastern Shore of Maryland.



College of Health & Human Services

For information & registration: **Jody Dengler, 410 546 2465**

Tour of the Richard A. Henson Medical Simulation Center

Wednesday, October 16 • 5 p.m.
Henson Medical Simulation Center
106 Pine Bluff Road, Salisbury MD

The center offers realistic and immersive learning experiences for healthcare students. See the future of education and get a firsthand glimpse into the integration of technology and health care. Discover the transformative power of simulation-based learning in preparing the next generation of health care professionals.

Please call to register by Tuesday, October 15.



Institute for Public Affairs & Civic Engagement (PACE)

For information: salisbury.edu/pace

Free Speech on the College Campus

Tuesday, September 17 • 6 p.m.
Guerrieri Student Union, Wicomico Room

Mark U.S. Constitution Day with a world café conversation about free speech as an element of intellectual exercise and how people at SU conceive of the values, challenges and limitations of free speech in an academic setting. Opens with a panel discussion featuring SU President Carolyn Ringer Lepre.



Campus & Community Networking Lunch

Thursday, September 19 • 11 a.m.-1 p.m.
Commons, Worcester Room

Free and open to the public, but registration required: salisbury.edu/pace

Meet with leaders from community organizations and campus offices working across a range of services and industries. Discuss ways to partner on research and assessment, programming or efforts. Learn about University supports to help deepen your working relationships.



Fulton Feature Friday

For information: **410-548-3586**

Salisbury University in Downtown Salisbury

Doors open 5 p.m. • Show Starts 6 p.m.
The Brick Room • 116 N. Division St.

Free and Open to the Public, NO TICKETS REQUIRED, Must be 21+. This monthly series on the second Friday features music from SU faculty, staff, and friends.

Sponsored by the Whaley Family Foundation

SPH+2

September 13

SPH+2 is the chordless trio of faculty member Stephen Philip Harvey. This ensemble explores straight ahead jazz through original compositions and jazz standards in an intimate instrumentation. Their debut album, *Library Card*, released March 2024.



Baba Yaga

October 11

Join us for a special Halloween-inspired event. Baba Yaga is a Salisbury-based band who sought refuge from the plague by conducting musical experiments in a basement. Their original music draws influences from art rock, blues, British folk revival, classical, dream pop and shoegaze. Baba Yaga is Grayson English, Jessica English, Dan Moreno-Holt and Eric Shuster. Costumes encouraged!



Photo Credit: Todd Dudek



Sally & Arnaud Perret

November 8

These two Modern Language and Intercultural Studies Department professors showcase both original songs and fun covers that range in style, genre and, of course, language. It will be an eclectic delight of stories through song.

Institute of Retired Persons

For information: salisbury.edu/irp

Weekly Tuesday Meeting • 2 p.m.

MAC Center • 909 Progress Circle, Salisbury

Targeted for adults aged 50 and above, the IRP has a regular meeting every Tuesday at the MAC Center and offers programs that include a speaker series, kayaking, hiking and biking excursions. Membership is open to all at a small yearly fee.



Photo Credit: Todd Dudek

Modern Languages & Intercultural Studies Department

For information: **410-543-6341**

Community Conversation Hours in Spanish: 🌐

TUESDAYS: September 10-November 19 • 5-6 p.m.
Hoppers • 1400 S. Salisbury Blvd. #6

Community members are invited to practice their Spanish during weekly Community Conversation Hours with the help of SU Associate Professor Sally Perret.



Philosophy Department

For information: **410-677-5070**

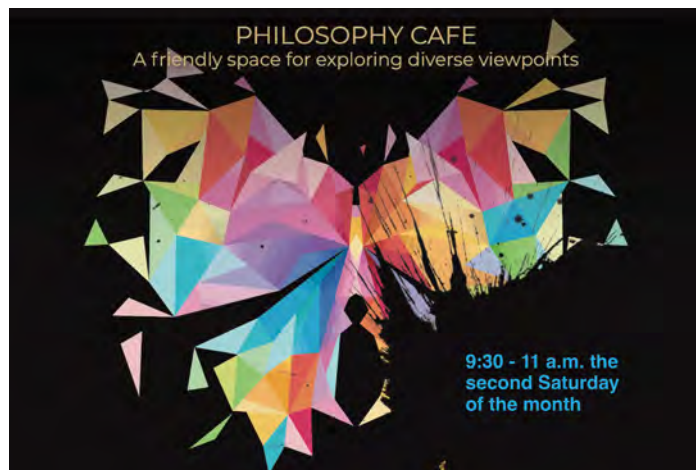
Philosophy Café

**SATURDAYS: September 14, October 12, November 9,
December 14 • 9:30-11 a.m.**

**Newton Street Community Center
306 Newton Street, Salisbury**

The Philosophy Café meets once a month during the school year, with a new question for every session. A friendly space for exploring diverse viewpoints, the Café aims to facilitate genuine dialogue, mutual understanding and self-reflection among the Salisbury community. Sessions are moderated by SU Philosophy Department faculty.

Free and open to the public.



Young Thinkers Club

**THURSDAYS: September 26, October 10,
October 24, November 14 • 4:30-5:15 p.m.**
Wicomico Public Library Downtown

In the Young Thinkers Club, children play games, talk and do activities that get them thinking – and having fun! Focused on practicing critical thinking skills, this club is led by faculty and students from SU's Philosophy Department in partnership with Wicomico Public Library.

Young Thinkers Festival

Saturday, November 16 • 10:30 a.m.-12:30 p.m.
Wicomico Public Library Downtown

It's the Young Thinkers party extravaganza! Join us for a fun time with critical thinking, picture book deep dives and problem-solving for children, teens and families.

The Young Thinkers Festival is presented in partnership with faculty and students from SU's Philosophy Department, the Wicomico Public Library and the Eastern Shore Literacy Association.

AUGUST 2024

| SUNDAY | MONDAY | TUESDAY | WEDNESDAY | THURSDAY | FRIDAY | SATURDAY |
|-----------|--|--|--|--|--|-----------|
| | | | | 1 Through September 14, Conversations EXH, CH-Gallery 128, p. 14 | 2 | 3 |
| 4 | 5 | 6 | 7 | 8 | 9 | 10 |
| 11 | 12 Shore Hatchery Reg. Opens, p. 25 | 13 | 14 | 15 | 16 | 17 |
| 18 | 19 | 20 | 21 | 22 | 23 | 24 |
| 25 | 26 Aerial Photo EXH Opens, GAC 4th Fl., 10 a.m.-4 p.m., p. 17 Black Histories on Delmarva EXH Opens, GAC, p. 17 August 26-October 26, Muriel Hasbun EXH, DG, p. 14 | 27 Every Tuesday: IRP mtg., MAC Cntr., 2 p.m., p. 29 | 28 Panorama and Cultural Fellowship Program Launch!, 5 p.m., SR, p. 24 | 29 Student Research Showcase, 3:30-5 p.m., AH, p. 27 | 30 August 30-Sept. 27, Brea Branche Painting EXH, GSU, p. 17 | 31 |

■ PERFORMING ARTS
 ■ VISUAL ARTS & EXHIBITIONS
 ■ LITERARY ARTS & FILM
 ■ LECTURES, SEMINARS, SYMPOSIUMS
 ■ HERITAGE MONTH EVENTS
 ■ FESTIVALS & SPECIAL EVENTS
 ■ SU AROUND TOWN

CALENDAR ABBREVIATIONS

EXH: Exhibition
 LEC: Lecture
 SYM: Symposium
 FCQ: Fulton Faculty Colloquium
 ENCQ: Environmental Studies Colloquia
 Phil. Café: Philosophy Café

FPH: Fulton Public Humanities
 AHS: Adventures in Humanities Seminar
 IRP: Institute of Retired Persons
 JCMS: Peter & Judy Jackson Chamber Music Series
 JFA: Holloway Hall, Jackson Family Auditorium
 GH: Holloway Hall, Great Hall

SR: Holloway Hall, Social Room
 BB: Fulton Hall, Black Box Theatre
 CW: Commons, Worcester Room
 CH: Conway Hall
 FH: Fulton Hall
 PH: Perdue Hall

HS: Henson Science Hall
 UG: Fulton Hall, University Gallery
 DG: Downtown Gallery
 GAC: Guerrieri Academic Commons
 AH: Guerrieri Academic Commons, Assembly Hall
 GSU: Guerrieri Student Union

Scan here for a FREE visitor parking pass:



SEPTEMBER 2024

| SUNDAY | MONDAY | TUESDAY | WEDNESDAY | THURSDAY | FRIDAY | SATURDAY |
|---|---|---|--|--|---|--|
| 1 | 2 | 3 FCQ: Lelić & Mosher, 3:30 p.m., CH152, p. 20 | 4 ENCQ: Student Internships, 7 p.m., PH156, p. 19 | 5 | 6 | 7 |
| 8 Film: <i>Argentina, 1985</i> , 3 p.m., FH111, p. 18 | 9 Democracy Across the Disciplines Lecture Series, 7 p.m., PH156, p. 21 | 10 Spanish Conversation Hours, 5 p.m., Hoppers, p. 30 | 11 Delmarva Big Band, 7:30 p.m., JFA, p. 6 Writers On The Shore: Creative Writing Festival, 8 p.m., PH156, p. 18 | 12 <i>Conversations</i> , EXH Talk/Recept., 5:30 p.m., CH156, p. 14 | 13 Fulton Feature Friday: SPH+2, 6 p.m., Brick Room, p. 29 | 14 Philosophy Café, 9:30 a.m., Newton Comm. Cntr., p. 30 |
| 15 | 16 Democracy Across the Disciplines Lecture Series, 7 p.m., PH156, p. 21 September 16-December 20, John Mosher EXH, UG, p. 15 | 17 Spanish Conversation Hours, 5 p.m., Hoppers, p. 30 PACE Constitution Day Free Speech Event, 6 p.m., GSU Wicomico Room, p.28 | 18 | 19 PACE Networking Lunch, 11 a.m., CW, p. 28 Talk/Wkshp. with Muriel Hasbun, 5:30 p.m., DG, p. 14 Omari Banks Concert, 7:30 p.m., JFA, p.26 | 20 Omari Banks Talk, Noon, PH348, p.26 Reception: Muriel Hasbun, 5 p.m., DG, p. 14 Maryland Folk Festival, Downtown Sby., p. 27 | 21 Maryland Folk Festival, Downtown Sby., p. 27 |
| 22 Maryland Folk Festival, Downtown Sby., p. 27 | 23 Language Across the Disciplines, 6 p.m., CH156, p. 20 Democracy Across the Disciplines Lecture Series, 7 p.m., PH156, p. 21 Shore Hatchery Reg. Closes, p. 25 | 24 Spanish Conversation Hours, 5 p.m., Hoppers, p. 30 | 25 Fulton Job Internship Fair. Noon-3 p.m., GSU Link, p. 24 Allegheny Ensemble, 7:30 p.m., GH, p. 8 Writers On The Shore: Ryan Habermeyer, 8 p.m., CW, p. 18 | 26 Young Thinkers Club, 4:30 p.m., Downtown Library, p. 30 Ashley Moog Bowsbey Art Talk, 5:30 p.m., CH156, p. 15 Native Am. Heritage: Jessica Taylor LEC, 7 p.m., CH153, p. 22 | 27 Sea Gull Century, p. 27 | 28 Sea Gull Century, p. 27 |
| 29 | 30 Democracy Across the Disciplines Lecture Series, 7 p.m., PH156, p. 21 JCMS: André Mehmani Concert, 7 p.m., GH, p. 7 September 30-October 31, Rachel Carbo Painting EXH, GSU, p. 17 | | | | | |

■ PERFORMING ARTS
 ■ VISUAL ARTS & EXHIBITIONS
 ■ LITERARY ARTS & FILM
 ■ LECTURES, SEMINARS, SYMPOSIUMS
 ■ HERITAGE MONTH EVENTS
 ■ FESTIVALS & SPECIAL EVENTS
 ■ SU AROUND TOWN

CALENDAR ABBREVIATIONS

EXH: Exhibition
 LEC: Lecture
 SYM: Symposium
 FCQ: Fulton Faculty Colloquium
 ENCQ: Environmental Studies Colloquia
 Phil. Café: Philosophy Café

FPH: Fulton Public Humanities
 AHS: Adventures in Humanities Seminar
 IRP: Institute of Retired Persons
 JCMS: Peter & Judy Jackson Chamber Music Series
 JFA: Holloway Hall, Jackson Family Auditorium
 GH: Holloway Hall, Great Hall

SR: Holloway Hall, Social Room
 BB: Fulton Hall, Black Box Theatre
 CW: Commons, Worcester Room
 CH: Conway Hall
 FH: Fulton Hall
 PH: Perdue Hall

HS: Henson Science Hall
 UG: Fulton Hall, University Gallery
 DG: Downtown Gallery
 GAC: Guerrieri Academic Commons
 AH: Guerrieri Academic Commons, Assembly Hall
 GSU: Guerrieri Student Union

Scan here for a FREE visitor parking pass:



OCTOBER 2024

| SUNDAY | MONDAY | TUESDAY | WEDNESDAY | THURSDAY | FRIDAY | SATURDAY |
|---|---|---|---|--|---|---|
| | | 1 FCQ: Namwamba & Schreibman, 3:30 p.m., CH152, p. 20 Spanish Conversation Hours, 5 p.m., Hoppers, p. 30 | 2 ENCQ: Thurka Sangaramoorthy, 7 p.m., PH156, p. 19 | 3 Henson Seminar: Joe Adserias-Garriga, 4 p.m., HS243, p. 20 Johab Silva Art Talk, 5:30 p.m., CH156, p. 15 | 4 CultureFest, GSU Wicomico Rm, 3-5 p.m., p. 26 | 5 Festival Latino!, Noon-3 p.m., FH-Lawn, p. 23 |
| 6 Film: <i>El Norte</i> , 3 p.m., FH111, p. 18 | 7 Democracy Across the Disciplines Lecture Series, 7 p.m., PH156, p. 21 | 8 Spanish Conversation Hours, 5 p.m., Hoppers, p. 30 FPH: Jeong-mi Park Book Talk, 6 p.m., CH153, p. 19 Diane Ravitch LEC, 7 p.m., JFA, p. 21 | 9 Writers On The Shore: Rachel M. Hanson, 8 p.m., CW, p. 18 | 10 Young Thinkers Club, 4:30 p.m., Downtown Library, p. 30 Tango Lovers, 7 p.m., JFA, p. 6 Theatre: <i>Fefu & Her Friends</i> , 7:30 p.m., BB, p. 12 | 11 Fulton Feature Friday: Baba Yaga, 6 p.m., Brick Room, p. 29 Theatre: <i>Fefu & Her Friends</i> , 7:30 p.m., BB, p. 12 | 12 Philosophy Café, 9:30 a.m., Newton Comm. Cntr., p. 30 Theatre: <i>Fefu & Her Friends</i> , 7:30 p.m., BB, p. 12 SSO Masterworks Concert, 7:30 p.m., JFA, p. 11 |
| 13 Theatre: <i>Fefu & Her Friends</i> , 2 p.m., BB, p. 12 | 14 Democracy Across the Disciplines Lecture Series, 7 p.m., PH156, p. 21 | 15 Spanish Conversation Hours, 5 p.m., Hoppers, p. 30 Film: <i>Heart of Glass</i> , 7 p.m., FH111 p. 23 | 16 Henson Simulation Cntr. Tour, 5 p.m., 106 Pine Bluff Rd., p. 28 | 17 Cara Ober & Raquel Castedo Art Talk, 5:30 p.m., DG, p. 16 | 18 | 19 |
| 20 | 21 Democracy Across the Disciplines Lecture Series, 7 p.m., PH156, p. 21 October 21-27, Alumni Homecoming Week & Family Weekend, p. 25 | 22 Spanish Conversation Hours, 5 p.m., Hoppers, p. 30 OMOB Panel, 7 p.m., AH, p. 25 | 23 ENCQ: Kathleen Kennedy, 7 p.m., PH156, p. 19 Writers On The Shore: Victoria Lancelotta, 8 p.m., CW, p. 18 | 24 Young Thinkers Club, 4:30 p.m., Downtown Library, p. 30 Mosher Art Talk/Recept., 5 p.m., UG, p. 15 | 25 Fall for Fulton, 11 a.m.-3 p.m., p. 24 Ghost Notes, 7:30 p.m., BB, p. 8 | 26 Nabb @ Alumni Homecoming Flock Party, 11 a.m.-2 p.m., Wayne St., p. 25 Closing/Close, Slow Looking/Hasbun EXH, 2 p.m., DG, p. 14 |
| 27 | 28 Democracy Across the Disciplines Lecture Series, 7 p.m., PH156, p. 21 | 29 Spanish Conversation Hours, 5 p.m., Hoppers, p. 30 | 30 Singers' Showcase, 7:30 p.m., GH, p. 8 | 31 Singers' Showcase, 7:30 p.m., GH, p. 8 | | |

■ PERFORMING ARTS
 ■ VISUAL ARTS & EXHIBITIONS
 ■ LITERARY ARTS & FILM
 ■ LECTURES, SEMINARS, SYMPOSIUMS
 ■ HERITAGE MONTH EVENTS
 ■ FESTIVALS & SPECIAL EVENTS
 ■ SU AROUND TOWN

CALENDAR ABBREVIATIONS

EXH: Exhibition
 LEC: Lecture
 SYM: Symposium
 FCQ: Fulton Faculty Colloquium
 ENCQ: Environmental Studies Colloquia
 Phil. Café: Philosophy Café

FPH: Fulton Public Humanities
 AHS: Adventures in Humanities Seminar
 IRP: Institute of Retired Persons
 JCMS: Peter & Judy Jackson Chamber Music Series
 JFA: Holloway Hall, Jackson Family Auditorium
 GH: Holloway Hall, Great Hall

SR: Holloway Hall, Social Room
 BB: Fulton Hall, Black Box Theatre
 CW: Commons, Worcester Room
 CH: Conway Hall
 FH: Fulton Hall
 PH: Perdue Hall

HS: Henson Science Hall
 UG: Fulton Hall, University Gallery
 DG: Downtown Gallery
 GAC: Guerrieri Academic Commons
 AH: Guerrieri Academic Commons, Assembly Hall
 GSU: Guerrieri Student Union

Scan here for a FREE visitor parking pass:



NOVEMBER 2024

| SUNDAY | MONDAY | TUESDAY | WEDNESDAY | THURSDAY | FRIDAY | SATURDAY |
|--|---|---|--|--|--|---|
| | | | | November 1-December 6, Delaney Cinnamon Painting EXH, GSU, p. 17 | 1 Shore Hatchery Comp., 9 a.m.-5 p.m., Rommel Cntr., p. 25 Peacherine Ragtime: <i>Mark of Zorro</i> , 7 p.m., JFA, p. 6 SU Dance Company, 7:30 p.m., BB, p. 13 | 2 AHS: Native Am. Land/Water Protectors, 10 a.m., CH 179, p. 22 SU Dance Company, 7:30 p.m., BB, p. 13 |
| 3 SU Dance Company, 2 p.m., BB, p. 13 Film: <i>Totem</i> , 3 p.m., FH111, p. 18 | 4 Democracy Across the Disciplines Lecture Series, 7 p.m., PH156, p. 21 | 5 Spanish Conversation Hours, 5 p.m., Hoppers, p. 30 FCQ: Burns & Illig, 3:30 p.m., CH152, p. 20 | 6 FPH: <i>Buddha on the Silver Screen</i> , 6:30 p.m., FH111, p. 19 | 7 | 8 Fulton Feature Friday: Sally & Arnaud Perret, 6 p.m., Brick Room, p. 29 Recital: Rheya Ford & Molly Fullerton, 7:30 p.m., GH, p. 8 | 9 Philosophy Café, 9:30 a.m., Newton Comm. Cntr., p. 30 Recital: Keilly Wolff & Grace McCreary Bagley, 7:30 p.m., GH, p. 9 |
| 10 | 11 Democracy Across the Disciplines Lecture Series, 7 p.m., PH156, p. 21 November 11-December 15, Senior Art/Design EXH, DG, p. 16 | 12 Spanish Conversation Hours, 5 p.m., Hoppers, p. 30 | 13 Rebecca Kontus Trio Concert, 7 p.m., GH, p. 7 Native Am. Heritage: River Networks LEC, 7 p.m., CH153, p. 22 Writers On The Shore: Sarah Barber, 8 p.m., CW, p. 18 | 14 Young Thinkers Club, 4:30 p.m., Downtown Library, p. 30 Cara Wade Art Talk, 5:30 p.m., CH156, p. 16 Percussion Ensemble, 7:30 p.m., JFA, p. 9 | 15 | 16 Young Thinkers Festival, 10:30 a.m., Downtown Library, p. 30 World Drum Ensemble, 7:30 p.m., JFA, p. 9 |
| 17 Recital: Eric Gehl, 2 p.m., JFA, p. 9 | 18 Democracy Across the Disciplines Lecture Series, 7 p.m., PH156, p. 21 | 19 Spanish Conversation Hours, 5 p.m., Hoppers, p. 30 JCMS: Still Waters Trio, 7 p.m., GH, p. 7 | 20 | 21 | 22 Piano & Strings Recital, 2 p.m., GH, p. 9 Senior Art/Design Awards Reception, 5 p.m., DG, p. 16 | 23 Opera Through the Ages! 7:30 p.m., JFA, p. 9 |
| 24 Opera Through the Ages! 4 p.m., JFA, p. 9 | 25 Democracy Across the Disciplines Lecture Series, 7 p.m., PH156, p. 21 | 26 | 27 | 28 | 29 | 30 |

■ PERFORMING ARTS
 ■ VISUAL ARTS & EXHIBITIONS
 ■ LITERARY ARTS & FILM
 ■ LECTURES, SEMINARS, SYMPOSIUMS
 ■ HERITAGE MONTH EVENTS
 ■ FESTIVALS & SPECIAL EVENTS
 ■ SU AROUND TOWN

CALENDAR ABBREVIATIONS

EXH: Exhibition
 LEC: Lecture
 SYM: Symposium
 FCQ: Fulton Faculty Colloquium
 ENCQ: Environmental Studies Colloquia
 Phil. Café: Philosophy Café

FPH: Fulton Public Humanities
 AHS: Adventures in Humanities Seminar
 IRP: Institute of Retired Persons
 JCMS: Peter & Judy Jackson Chamber Music Series
 JFA: Holloway Hall, Jackson Family Auditorium
 GH: Holloway Hall, Great Hall

SR: Holloway Hall, Social Room
 BB: Fulton Hall, Black Box Theatre
 CW: Commons, Worcester Room
 CH: Conway Hall
 FH: Fulton Hall
 PH: Perdue Hall

HS: Henson Science Hall
 UG: Fulton Hall, University Gallery
 DG: Downtown Gallery
 GAC: Guerrieri Academic Commons
 AH: Guerrieri Academic Commons, Assembly Hall
 GSU: Guerrieri Student Union

Scan here for a FREE visitor parking pass:



DECEMBER 2024

| SUNDAY | MONDAY | TUESDAY | WEDNESDAY | THURSDAY | FRIDAY | SATURDAY |
|--|---|---|--|---|-----------|---|
| 1 | 2 Democracy Across the Disciplines Lecture Series, 7 p.m., PH156, p. 21 | 3 FCQ: Schlehofer/Stock/Nyland, 3:30 p.m., CH152, p. 20 Salisbury Pops, 7:30 p.m., JFA, p. 9 | 4 | 5 Jazz Ensemble, 7:30 p.m., JFA, p. 10 | 6 | 7 Latin American & Latinx SYM, 9 a.m.-2 p.m., PH-Atrium, p.19 Theatre: Devised Performance, 7:30 p.m., BB, p. 12 SSO Holiday Concert, 7:30 p.m., JFA, p. 11 |
| 8 Vox Concordia, 4 p.m., GH, p. 10 | 9 Democracy Across the Disciplines Lecture Series, 7 p.m., PH156, p. 21 | 10 PRESTO Recitals, 5 & 7 p.m., GH, p. 10 | 11 A Not-So-Silent Night, 7:30 p.m., BB, p. 10 | 12 Salisbury Youth Orchestra, 7:30 p.m., JFA, p. 11 | 13 | 14 Philosophy Café, 9:30 a.m., Newton Comm. Cntr., p. 30 |
| 15 Flute Ensemble, 2 p.m., GH, p. 11 | 16 | 17 | 18 | 19 | 20 | 21 |
| 22 | 23 | 24 | 25 | 26 | 27 | 28 |
| 29 | 30 | 31 | | | | |

■ PERFORMING ARTS
 ■ VISUAL ARTS & EXHIBITIONS
 ■ LITERARY ARTS & FILM
 ■ LECTURES, SEMINARS, SYMPOSIUMS
 ■ HERITAGE MONTH EVENTS
 ■ FESTIVALS & SPECIAL EVENTS
 ■ SU AROUND TOWN

CALENDAR ABBREVIATIONS

EXH: Exhibition
 LEC: Lecture
 SYM: Symposium
 FCQ: Fulton Faculty Colloquium
 ENCQ: Environmental Studies Colloquia
 Phil. Café: Philosophy Café

FPH: Fulton Public Humanities
 AHS: Adventures in Humanities Seminar
 IRP: Institute of Retired Persons
 JCMS: Peter & Judy Jackson Chamber Music Series
 JFA: Holloway Hall, Jackson Family Auditorium
 GH: Holloway Hall, Great Hall

SR: Holloway Hall, Social Room
 BB: Fulton Hall, Black Box Theatre
 CW: Commons, Worcester Room
 CH: Conway Hall
 FH: Fulton Hall
 PH: Perdue Hall

HS: Henson Science Hall
 UG: Fulton Hall, University Gallery
 DG: Downtown Gallery
 GAC: Guerrieri Academic Commons
 AH: Guerrieri Academic Commons, Assembly Hall
 GSU: Guerrieri Student Union

Scan here for a FREE visitor parking pass:





Fulton School of Liberal Arts
1101 Camden Avenue
Salisbury, MD 21801

For questions or to update your
mailing address, please email:
culturalaffairs@salisbury.edu

A photograph of a man and a woman in formal attire dancing tango. The woman is wearing a red dress with black lace detailing, and the man is wearing a dark suit. They are in a close embrace, looking at each other. The background is dark with blue and purple light patterns.

TANGO LOVERS – VOLVER 2

Thursday, October 10 • 7 p.m.

See page 6 for details.