

SALISBURY UNIVERSITY: POCOMOKE HALL

EMERGENCY INFORMATION:

BASEMENT FLOOR



FIRE EMERGENCY

WHEN ALARM SOUNDS, TURN OFF ANY POTENTIALLY HAZARDOUS ELECTRICAL EQUIPMENT AND WALK TO THE NEAREST EXIT. DO NOT USE ELEVATORS DURING A FIRE EVACUATION. MOVE TO THE EVACUATION ASSEMBLY AREA AND REMAIN THERE UNTIL NOTIFIED "ALL CLEAR". INDIVIDUALS NEEDING EVACUATION ASSISTANCE FROM UPPER FLOORS OR BASEMENT SHOULD PROCEED TO A FIRE RATED STAIRWELL OR IN A SPRINKLERED BUILDING, REMAIN IN PLACE. IF SHELTERING IN THE BUILDING, NOTIFY UNIVERSITY POLICE OF YOUR LOCATION. EMERGENCY PERSONNEL WILL BE SENT TO YOUR LOCATION.



SEVERE WEATHER

WHEN NOTIFIED OF SEVERE WEATHER, SEEK SHELTER ON THE LOWEST BUILDING LEVEL IN AREAS WITHOUT GLASS. THESE AREAS ARE ILLUSTRATED IN BLUE. REMAIN THERE UNTIL NOTIFIED "ALL CLEAR" BY CAMPUS POLICE, A BUILDING MANAGER OR THE LOCAL WEATHER STATION. DO NOT GO OUTDOORS UNTIL THE WEATHER EVENT HAS SUBSIDED.



MEDICAL EMERGENCY

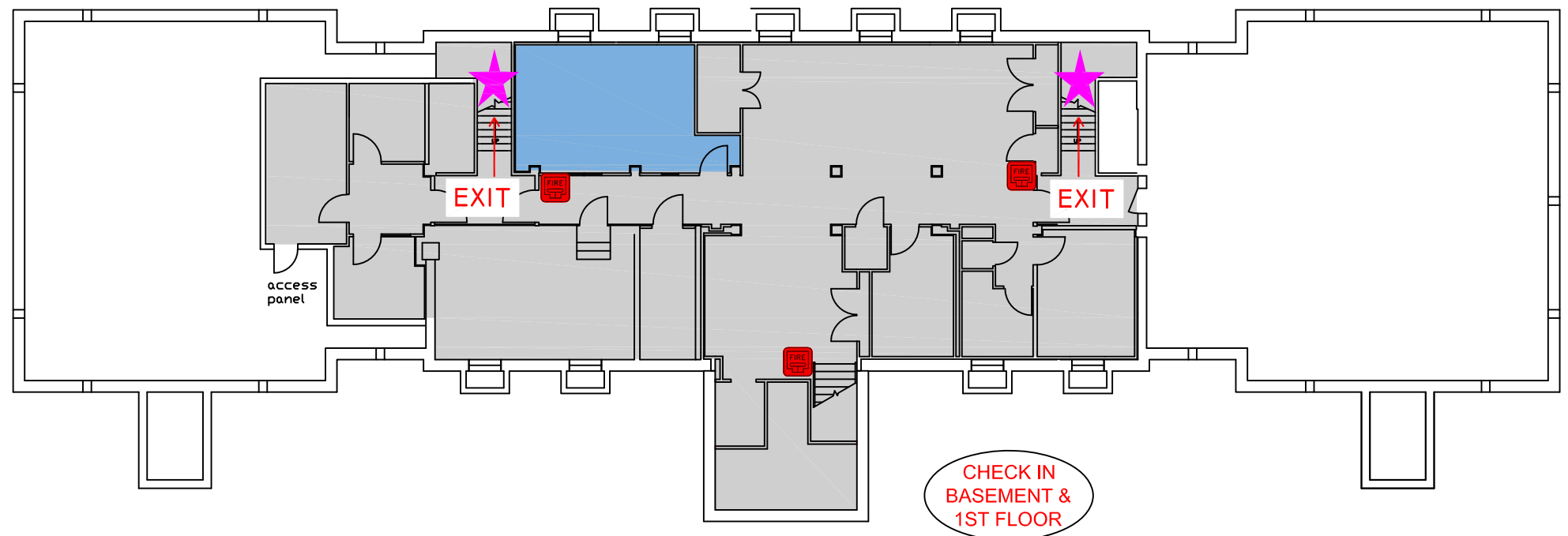
IF A MEDICAL EMERGENCY OCCURS, CALL 911 AND PROVIDE AS MUCH INFORMATION AS POSSIBLE TO THE OPERATOR. STAY ON THE LINE UNTIL THE OPERATOR INDICATED THAT YOU MAY HANG UP. THE 911 OPERATOR WILL CALL UNIVERSITY POLICE AND INFORM THEM OF THE EMERGENCY.

FIRE PROTECTION FEATURES:

- AUTOMATIC FIRE SPRINKLER SYSTEM
- FIRE RATED STAIRWELLS
- EACH SLEEPING SPACE EQUIPPED WITH SMOKE ALARM
- AUTOMATIC FIRE ALARM SYSTEM

UNIVERSITY POLICE: 410-543-6222

ENVIRONMENTAL SAFETY: 410-546-6485



FIRE ALARM PULL STATION



AED DEFIBRILLATOR



FIRE RATED STAIRWELL



SHELTER IN PLACE

SALISBURY UNIVERSITY: POCOMOKE HALL

EMERGENCY INFORMATION:

FIRST FLOOR



FIRE EMERGENCY

WHEN ALARM SOUNDS, TURN OFF ANY POTENTIALLY HAZARDOUS ELECTRICAL EQUIPMENT AND WALK TO THE NEAREST EXIT. DO NOT USE ELEVATORS DURING A FIRE EVACUATION. MOVE TO THE EVACUATION ASSEMBLY AREA AND REMAIN THERE UNTIL NOTIFIED "ALL CLEAR". INDIVIDUALS NEEDING EVACUATION ASSISTANCE FROM UPPER FLOORS OR BASEMENT SHOULD PROCEED TO A FIRE RATED STAIRWELL OR IN A SPRINKLERED BUILDING, REMAIN IN PLACE. IF SHELTERING IN THE BUILDING, NOTIFY UNIVERSITY POLICE OF YOUR LOCATION. EMERGENCY PERSONNEL WILL BE SENT TO YOUR LOCATION.



SEVERE WEATHER

WHEN NOTIFIED OF SEVERE WEATHER, SEEK SHELTER ON THE LOWEST BUILDING LEVEL IN AREAS WITHOUT GLASS. THESE AREAS ARE ILLUSTRATED IN BLUE. REMAIN THERE UNTIL NOTIFIED "ALL CLEAR" BY CAMPUS POLICE, A BUILDING MANAGER OR THE LOCAL WEATHER STATION. DO NOT GO OUTDOORS UNTIL THE WEATHER EVENT HAS SUBSIDED.



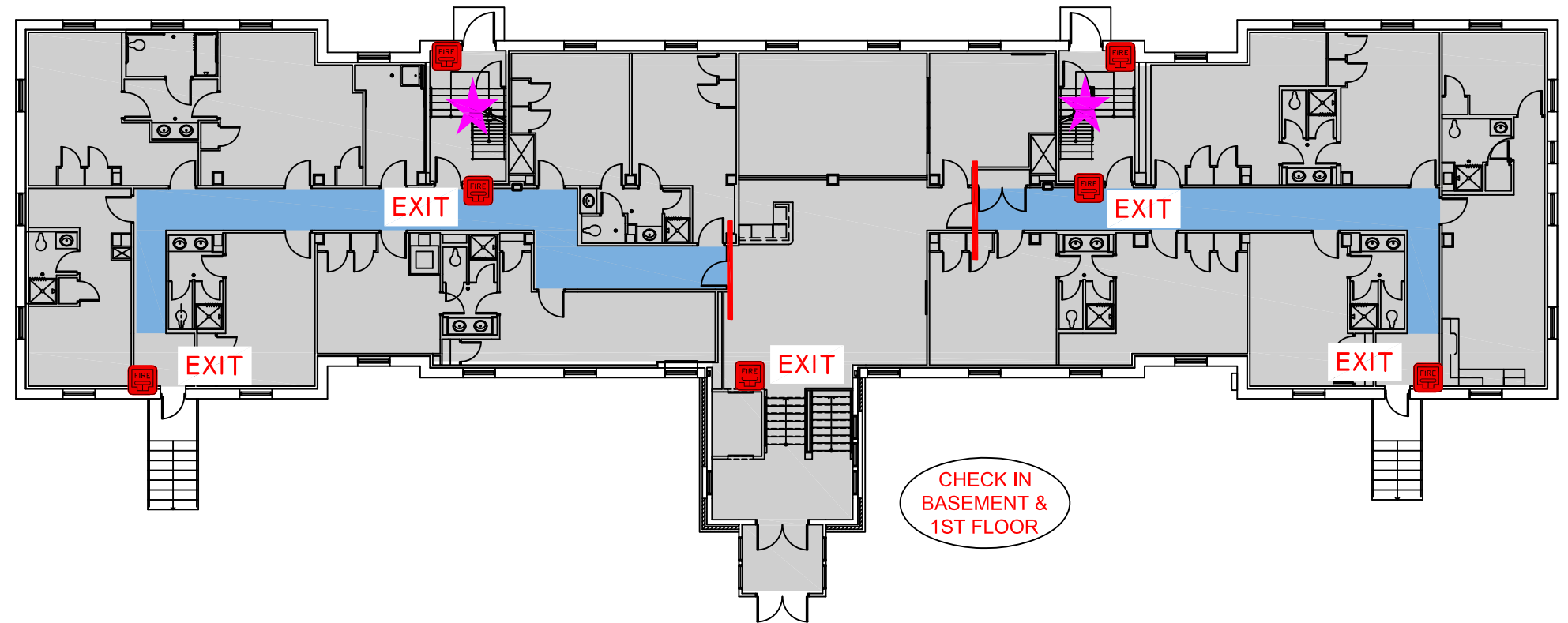
MEDICAL EMERGENCY

IF A MEDICAL EMERGENCY OCCURS, CALL 911 AND PROVIDE AS MUCH INFORMATION AS POSSIBLE TO THE OPERATOR. STAY ON THE LINE UNTIL THE OPERATOR INDICATED THAT YOU MAY HANG UP. THE 911 OPERATOR WILL CALL UNIVERSITY POLICE AND INFORM THEM OF THE EMERGENCY.

FIRE PROTECTION FEATURES:

- AUTOMATIC FIRE SPRINKLER SYSTEM
- FIRE RATED STAIRWELLS
- EACH SLEEPING SPACE EQUIPPED WITH SMOKE ALARM
- AUTOMATIC FIRE ALARM SYSTEM

UNIVERSITY POLICE: 410-543-6222
ENVIRONMENTAL SAFETY: 410-546-6485



- FIRE ALARM PULL STATION
- AED DEFIBRILLATOR
- FIRE RATED STAIRWELL
- SHELTER IN PLACE
- FIRE RATED SEPARATION IN CORRIDORS

EMERGENCY INFORMATION:

SECOND FLOOR



FIRE EMERGENCY

WHEN ALARM SOUNDS, TURN OFF ANY POTENTIALLY HAZARDOUS ELECTRICAL EQUIPMENT AND WALK TO THE NEAREST EXIT. DO NOT USE ELEVATORS DURING A FIRE EVACUATION. MOVE TO THE EVACUATION ASSEMBLY AREA AND REMAIN THERE UNTIL NOTIFIED "ALL CLEAR". INDIVIDUALS NEEDING EVACUATION ASSISTANCE FROM UPPER FLOORS OR BASEMENT SHOULD PROCEED TO A FIRE RATED STAIRWELL OR IN A SPRINKLERED BUILDING, REMAIN IN PLACE. IF SHELTERING IN THE BUILDING, NOTIFY UNIVERSITY POLICE OF YOUR LOCATION. EMERGENCY PERSONNEL WILL BE SENT TO YOUR LOCATION.



SEVERE WEATHER

WHEN NOTIFIED OF SEVERE WEATHER, SEEK SHELTER ON THE LOWEST BUILDING LEVEL IN AREAS WITHOUT GLASS. THESE AREAS ARE ILLUSTRATED IN BLUE. REMAIN THERE UNTIL NOTIFIED "ALL CLEAR" BY CAMPUS POLICE, A BUILDING MANAGER OR THE LOCAL WEATHER STATION. DO NOT GO OUTDOORS UNTIL THE WEATHER EVENT HAS SUBSIDED.



MEDICAL EMERGENCY

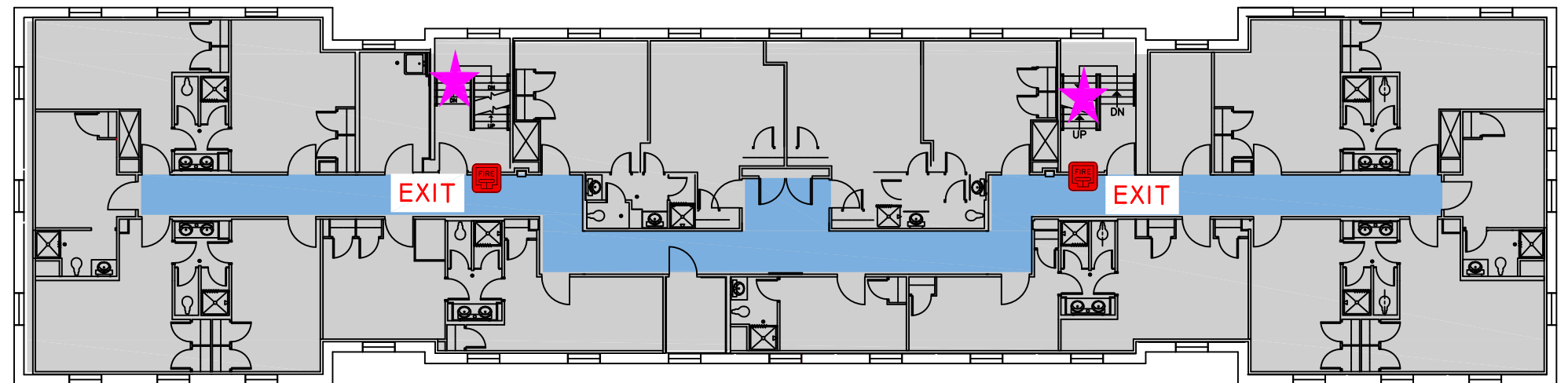
IF A MEDICAL EMERGENCY OCCURS, CALL 911 AND PROVIDE AS MUCH INFORMATION AS POSSIBLE TO THE OPERATOR. STAY ON THE LINE UNTIL THE OPERATOR INDICATED THAT YOU MAY HANG UP. THE 911 OPERATOR WILL CALL UNIVERSITY POLICE AND INFORM THEM OF THE EMERGENCY.

FIRE PROTECTION FEATURES:

- AUTOMATIC FIRE SPRINKLER SYSTEM
- FIRE RATED STAIRWELLS
- EACH SLEEPING SPACE EQUIPPED WITH SMOKE ALARM
- AUTOMATIC FIRE ALARM SYSTEM

UNIVERSITY POLICE: 410-543-6222
ENVIRONMENTAL SAFETY: 410-546-6485

CHECK IN
2ND & 3RD FLOOR
DEVILBISS
LOT



FIRE ALARM PULL STATION AED DEFIBRILLATOR FIRE RATED STAIRWELL SHELTER IN PLACE

SALISBURY UNIVERSITY: POCOMOKE HALL

EMERGENCY INFORMATION:

THIRD FLOOR



FIRE EMERGENCY

WHEN ALARM SOUNDS, TURN OFF ANY POTENTIALLY HAZARDOUS ELECTRICAL EQUIPMENT AND WALK TO THE NEAREST EXIT. DO NOT USE ELEVATORS DURING A FIRE EVACUATION. MOVE TO THE EVACUATION ASSEMBLY AREA AND REMAIN THERE UNTIL NOTIFIED "ALL CLEAR". INDIVIDUALS NEEDING EVACUATION ASSISTANCE FROM UPPER FLOORS OR BASEMENT SHOULD PROCEED TO A FIRE RATED STAIRWELL OR IN A SPRINKLERED BUILDING, REMAIN IN PLACE. IF SHELTERING IN THE BUILDING, NOTIFY UNIVERSITY POLICE OF YOUR LOCATION. EMERGENCY PERSONNEL WILL BE SENT TO YOUR LOCATION.



SEVERE WEATHER

WHEN NOTIFIED OF SEVERE WEATHER, SEEK SHELTER ON THE LOWEST BUILDING LEVEL IN AREAS WITHOUT GLASS. THESE AREAS ARE ILLUSTRATED IN BLUE. REMAIN THERE UNTIL NOTIFIED "ALL CLEAR" BY CAMPUS POLICE, A BUILDING MANAGER OR THE LOCAL WEATHER STATION. DO NOT GO OUTDOORS UNTIL THE WEATHER EVENT HAS SUBSIDED.



MEDICAL EMERGENCY

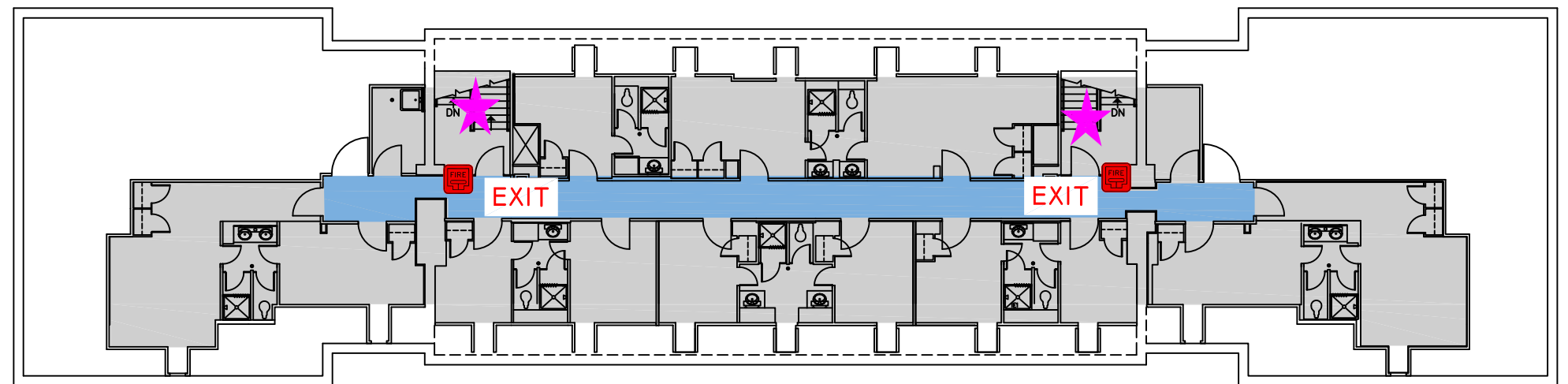
IF A MEDICAL EMERGENCY OCCURS, CALL 911 AND PROVIDE AS MUCH INFORMATION AS POSSIBLE TO THE OPERATOR. STAY ON THE LINE UNTIL THE OPERATOR INDICATED THAT YOU MAY HANG UP. THE 911 OPERATOR WILL CALL UNIVERSITY POLICE AND INFORM THEM OF THE EMERGENCY.

FIRE PROTECTION FEATURES:

- AUTOMATIC FIRE SPRINKLER SYSTEM
- FIRE RATED STAIRWELLS
- EACH SLEEPING SPACE EQUIPPED WITH SMOKE ALARM
- AUTOMATIC FIRE ALARM SYSTEM

UNIVERSITY POLICE: 410-543-6222
ENVIRONMENTAL SAFETY: 410-546-6485

CHECK IN
2ND & 3RD FLOOR
DEVILBISS
LOT



FIRE ALARM PULL STATION



AED DEFIBRILLATOR



FIRE RATED STAIRWELL



SHELTER IN PLACE