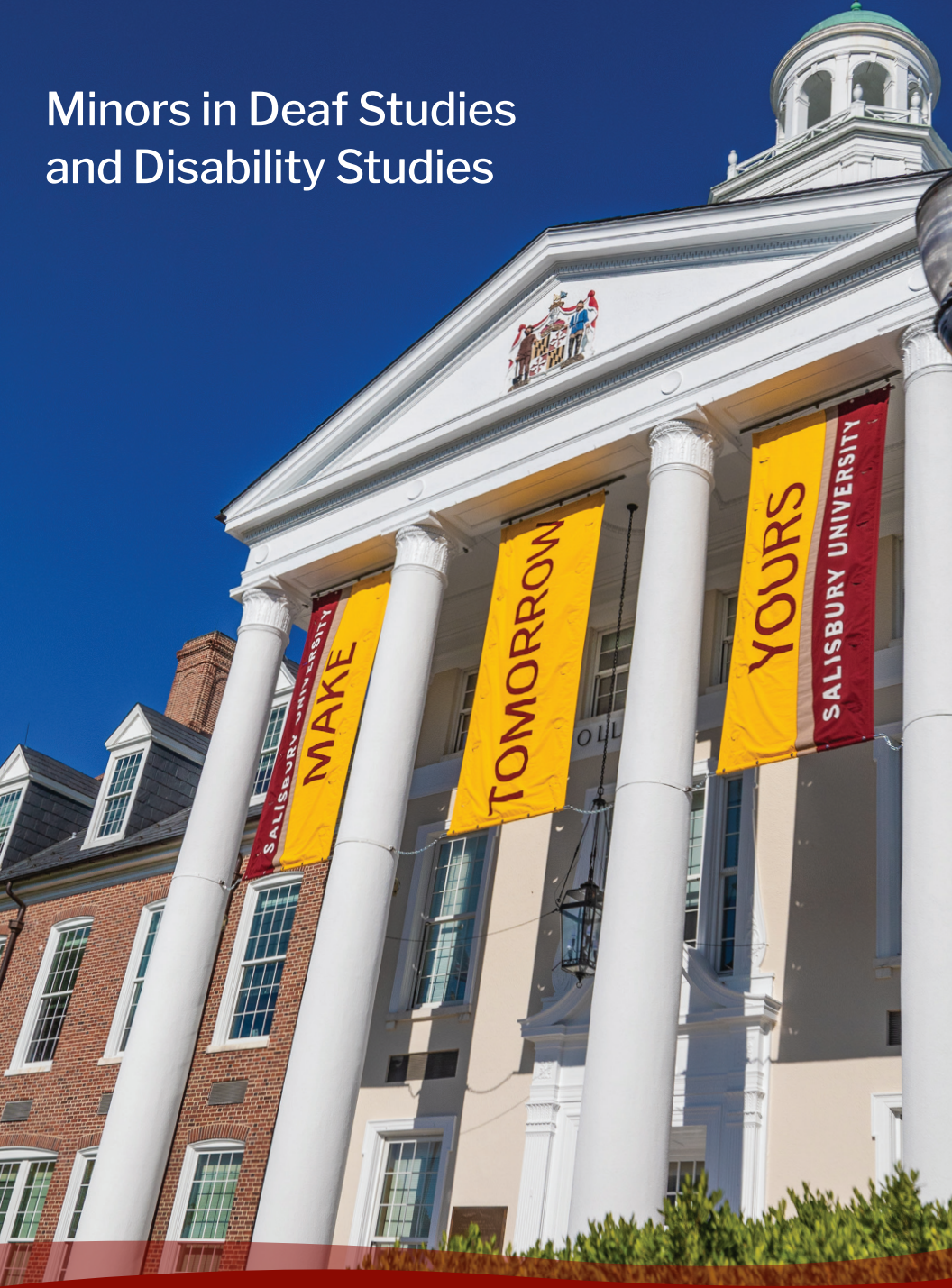


Minors in Deaf Studies and Disability Studies



Make Tomorrow Yours ›

Salisbury
UNIVERSITY

Disability Studies Minor

The disability studies minor fosters conversation about disability identity and acceptance with a variety of courses that aim to de-stigmatize disability, disease and impairment, including those that are considered “invisible.” Students of all majors and backgrounds can benefit from a minor in disability studies, as disability culture extends across every discipline and career field.

The minor’s core consists of two courses:

ASL 101 Elementary American Sign Language I

Beginning study of American Sign Language including the culture of deaf people.



SOWK 475 Disabilities Studies: Culture and Practice

Examines the life course and identity of people with disabilities, and presents general issues related to services available, advocacy movements, and social policy.

Three additional courses are taken from the list below – no more than two with the same prefix and since SOWK is part of the core, you may take one additional SOWK course:

ENGL 468 Disability Rhetoric

Intensive study of selected topics on disability in writing and rhetoric.

Prerequisite: C or better in ENGL 103

PHIL 334 Philosophical Perspectives on Mental Health

Examines mental disorders and the practice of psychiatry. Topics include the nature of mental disorder, mind-body relationship, rationality, personal identity and agency, and the ethics of treatment.

PSYC 302 Abnormal Psychology

Survey of the etiology, diagnosis and prognosis of neuroses, psychoses, psychosomatic disorders, transient situational maladjustments and personality disorders, with discussions of various treatment approaches.

Prerequisite: PSYC 101

PSYC 402 Childhood Disorders

A developmental study of behavior problems in children and adolescents, ranging from mild personality disorders to psychoses. Course focuses on description, etiology and treatment of childhood disorders.

Prerequisite: PSYC 101

PSYC 423 Developmental Disabilities

Study of children who vary from the norm, including those with physical disabilities, mental disabilities and socio-emotional disturbances.

Prerequisite: PSYC 250

SOCI 334 Sociology of Mental Health

Study of sociocultural factors in mental health and illness emphasizing social causation and patterns of distribution.

SOCI 361 Aging and Society

Examination of the aging process from the sociological perspective. Emphasis on the position of the elderly in contemporary society and on age-roles associated with stages in the process of aging such as childhood, adolescence, adulthood and old age.

SOWK 351 Deaf Culture and Deaf History

Provides insights and perspectives on the cultural aspects and history of the deaf and hard of hearing communities in the United States.

SOWK 451 Behavioral Health

Provides an overview of physiological, psychological and social impacts influenced by substance misuse and mental health with particular emphasis on vulnerable populations.

Prerequisite: SOWK 200 or permission of instructor

SOWK 454 Multidisciplinary Practice with People Who Are Deaf and Hard of Hearing

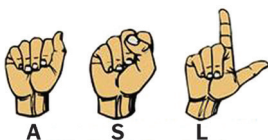
Provides insights and perspectives on the psychological, educational, social, rehabilitation, legal and employment aspects of people who are deaf and hard of hearing in the United States.

Prerequisite: ASL 101

PHEC 324 Adapted Physical Activity

Examine the effects of various disabilities on the physical/motor performance of an individual and compares and contrasts methods of adapting activities to meet the needs of all individuals.

Deaf Studies Minor



WWW.SIGNLANGUAGEFORUM.COM/ASL

Salisbury University's Deaf Studies Minor Program includes three levels of American Sign Language (ASL) classes, insights and perspectives into deaf culture and history, and an exploration of the psychological, educational, social, rehabilitation, legal and employment aspects of people who are deaf and hard of hearing. This minor can be taken with any major on campus.

ASL 101 Elementary American Sign Language I

Beginning study of American Sign Language, including the culture of deaf people.

ASL 102 Elementary American Sign Language II

Continuation of skill development and vocabulary and sign acquisition of American Sign Language including the culture of deaf people.

Prerequisite: ASL 101 or permission of instructor

ASL 201 Intermediate American Sign Language

Continued development and refinement of vocabulary and sign acquisition of American Sign Language and understanding of deaf culture.

Prerequisite: ASL 102 or permission of instructor

SOWK 351 Deaf Culture and Deaf History

Provides insights and perspectives on the culture and history of the deaf community in the United States. Topics covered include the social, cultural and medical models of deafness; history of the deaf community and deaf education; forms of communication used by people who are deaf and hard of hearing; diversity in the deaf community; and more.

SOWK 454 Multidisciplinary Practice with People who are Deaf and Hard of Hearing

Provides insights and perspectives on the psychological, educational, social, rehabilitation, legal and employment aspects of people who are deaf and hard of hearing.

Prerequisite: ASL 101

Make Tomorrow Yours



Located on Maryland's historic Eastern Shore, Salisbury University offers a wide range of disciplines through its over 40 majors, nearly 90 minors and some 15 graduate programs. SU consistently ranks among the top universities in the U.S. academically and as a best value.

SU sets success in motion with a community and culture where every student is heard, seen, supported, celebrated and challenged. SU propels you forward to a better tomorrow in both your life and career. In Salisbury's warm and welcoming environment, professors mentor students in a way that sparks change by connecting ideas to real-world, hands-on experiences.

Study where your opportunities are endless, your cost is affordable and your return on investment will pay back a lifetime of possibilities. This is why so many Salisbury graduates are thriving in their lives, communities and careers – across Maryland and beyond.

For more information contact:

Ellen Schaefer-Salins - exschaefer-salins@salisbury.edu

Candace Henry - cnhenry@salisbury.edu • Director of the Disability Resource Center